

For Research Use Only

# CoraLite® Plus 647-conjugated ERK1/2 Polyclonal antibody

Catalog Number: CL647-11257

Featured Product



## Basic Information

Catalog Number:

CL647-11257

Concentration:

1000 µg/ml

Source:

Rabbit

Isotype:

IgG

Immunogen Catalog Number:

AG1759

GenBank Accession Number:

BC013992

GeneID (NCBI):

5595

UNIPROT ID:

P27361

Full Name:

mitogen-activated protein kinase 3

Calculated MW:

43 kDa

Observed MW:

38-44 kDa

Purification Method:

Antigen affinity purification

Recommended Dilutions:

FC (Intra): 0.20 µg per 10<sup>6</sup> cells in a 100 µl suspension

Excitation/Emission maxima wavelengths:

654 nm / 674 nm

## Applications

Tested Applications:

FC (Intra)

Species Specificity:

human, mouse

Positive Controls:

FC (Intra) : HepG2 cells,

## Background Information

ERK1 and ERK2 belongs to the protein kinase superfamily. It is involved in both the initiation and regulation of meiosis, mitosis, and postmitotic functions in differentiated cells by phosphorylating a number of transcription factors such as ELK-1. ERK1/2 catalyzed the reaction: ATP + a protein = ADP + a phosphoprotein. It is activated by tyrosine phosphorylation in response to INS and NGF. This antibody can recognize both ERK1 and ERK2 with the molecular mass of 38-44 kDa.

## Storage

Storage:

Store at -20°C. Avoid exposure to light. Stable for one year after shipment.

Storage Buffer:

PBS with 50% glycerol, 0.05% Proclin300, 0.5% BSA, pH7.3

Aliquoting is unnecessary for -20°C storage

For technical support and original validation data for this product please contact:

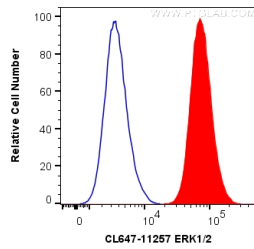
T: 4006900926

E: [Proteintech-CN@ptglab.com](mailto:Proteintech-CN@ptglab.com)

W: [ptgcn.com](http://ptgcn.com)

This product is exclusively available under Proteintech Group brand and is not available to purchase from any other manufacturer.

## Selected Validation Data



1X10<sup>6</sup> HepG2 cells were intracellularly stained with 0.2 ug CoraLite® Plus 647 Anti-Human ERK1/2 (CL647-11257) (red), or 0.2 ug CL647-30000 Rabbit IgG (blue). Cells were fixed with 4% PFA and permeabilized with Flow Cytometry Perm Buffer (PF00011-C).