

For Research Use Only



CoraLite® Plus 647-conjugated Glutamine Synthetase Polyclonal antibody

Catalog Number: **CL647-11037**

Featured Product

Basic Information

Catalog Number:

CL647-11037

Concentration:

1000 µg/ml

Source:

Rabbit

Isotype:

IgG

Immunogen Catalog Number:

AG1510

GenBank Accession Number:

BC011700

GeneID (NCBI):

2752

UNIPROT ID:

P15104

Full Name:

glutamate-ammonia ligase
(glutamine synthetase)

Calculated MW:

374 aa, 42 kDa

Observed MW:

40-42 kDa

Purification Method:

Antigen affinity purification

Recommended Dilutions:

FC (Intra): 0.20 ug per 10⁶ cells in a
100 µl suspension

Excitation/Emission maxima
wavelengths:

654 nm / 674 nm

Applications

Tested Applications:

FC (Intra)

Species Specificity:

human, mouse, rat

Positive Controls:

FC (Intra) : HepG2 cells,

Background Information

GLUL (Glutamine synthetase) is also named as GS, GLNS and belongs to the glutamine synthetase family. This enzyme has 2 functions: it catalyzes the production of glutamine and 4-aminobutanoate (gamma-aminobutyric acid, GABA), the latter in a pyridoxal phosphate-independent manner. By similarity, Essential for proliferation of fetal skin fibroblasts (PMID:18662667). Defects in GLUL are the cause of congenital systemic glutamine deficiency (CSGD). Organismal glutamine production is augmented secondary to an increase in the activity of glutamine synthetase in the lung and skeletal muscle (PMID:7630137). There are other bands with higher (66 kDa, 97 kDa) and lower (30 kDa) molecular weights also detected besides the 42 kDa band indicating the proteolysis of GLUL protein by the ubiquitin system (PMID:10091759).

Storage

Storage:

Store at -20°C. Avoid exposure to light. Stable for one year after shipment.

Storage Buffer:

PBS with 50% glycerol, 0.05% Proclin300, 0.5% BSA, pH7.3

Aliquoting is unnecessary for -20°C storage

For technical support and original validation data for this product please contact:

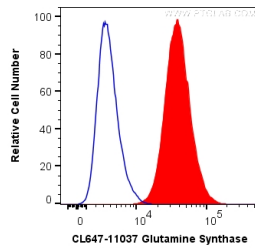
T: 4006900926

E: Proteintech-CN@ptglab.com

W: ptgcn.com

This product is exclusively available under Proteintech Group brand and is not available to purchase from any other manufacturer.

Selected Validation Data



1X10⁶ HepG2 cells were intracellularly stained with 0.2 ug CoraLite® Plus 647 Anti-Human Glutamine Synthetase (CL647-11037) (red), or 0.2 ug CL647-30000 Rabbit IgG (blue). Cells were fixed with 4% PFA and permeabilized with Flow Cytometry Perm Buffer (PF00011-C).