

For Research Use Only

CoraLite® Plus 647-conjugated Cytokeratin 19 Polyclonal antibody

Catalog Number: CL647-10712



Basic Information

Catalog Number:

CL647-10712

Concentration:

1000 µg/ml

Source:

Rabbit

Isotype:

IgG

Immunogen Catalog Number:

AG1085

GenBank Accession Number:

BC007628

GeneID (NCBI):

3880

UNIPROT ID:

P08727

Full Name:

keratin 19

Calculated MW:

40 kDa

Observed MW:

44-50 kDa

Purification Method:

Antigen affinity purification

Recommended Dilutions:

FC (Intra): 0.80 µg per 10⁶ cells in a 100 µl suspension

FC: 0.80 µg per 10⁶ cells in a 100 µl suspension

Excitation/Emission maxima wavelengths:

654 nm / 674 nm

Applications

Tested Applications:

FC (Intra)

Species Specificity:

human, mouse

Positive Controls:

FC (Intra) : HeLa cells,

FC : HeLa cells,

Background Information

Keratins are a large family of proteins that form the intermediate filament cytoskeleton of epithelial cells. Keratin expression is highly regulated, tissue specific, and varies according to cell-state. Type I keratins consist of acidic, low molecular weight proteins with MW ranging from 40 kDa (KRT19) to 64 kDa (KRT9). Type 2 keratins consist of basic or neutral, high molecular weight proteins with MW from 52 kDa (KRT8) to 67 kDa (KRT18). Keratin 19 is a type I cytokeratin. It is a biochemical marker of skin stem cells in vivo and in vitro.

Storage

Storage:

Store at -20°C. Avoid exposure to light. Stable for one year after shipment.

Storage Buffer:

PBS with 50% glycerol, 0.05% Proclin300, 0.5% BSA, pH7.3

Aliquoting is unnecessary for -20°C storage

For technical support and original validation data for this product please contact:

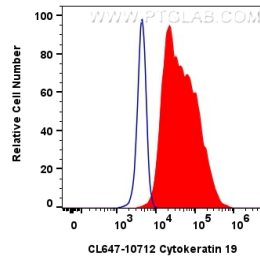
T: 4006900926

E: Proteintech-CN@ptglab.com

W: ptgcn.com

This product is exclusively available under Proteintech Group brand and is not available to purchase from any other manufacturer.

Selected Validation Data



1×10^6 HeLa cells were intracellularly stained with 0.8 μ g CoraLite® Plus 647-conjugated Cytokeratin 19 Polyclonal antibody (CL647-10712)(red), or 0.8 μ g CoraLite® Plus 647-conjugated Rabbit IgG control Rabbit PolyAb (CL647-30000) (blue). Cells were fixed with 4% PFA and permeabilized with Flow Cytometry Perm Buffer (PF00011-C).