

For Research Use Only

CoraLite® Plus 647-conjugated Calpain 1 Polyclonal antibody

Catalog Number: CL647-10538

Featured Product



Basic Information

Catalog Number:

CL647-10538

Concentration:

1000 µg/ml

Source:

Rabbit

Isotype:

IgG

Immunogen Catalog Number:

AG0810

GenBank Accession Number:

BC008751

GeneID (NCBI):

823

UNIPROT ID:

P07384

Full Name:

calpain 1, (mu/l) large subunit

Calculated MW:

704 aa, 82 kDa

Observed MW:

75 kDa

Purification Method:

Antigen affinity purification

Recommended Dilutions:

FC (Intra): 0.80 µg per 10⁶ cells in a 100 µl suspension

FC: 0.80 µg per 10⁶ cells in a 100 µl suspension

Excitation/Emission maxima wavelengths:

654 nm / 674 nm

Applications

Tested Applications:

FC (Intra)

Species Specificity:

human, mouse, rat

Positive Controls:

FC (Intra) : HeLa cells,

FC : HeLa cells,

Background Information

Storage

Storage:

Store at -20°C. Avoid exposure to light. Stable for one year after shipment.

Storage Buffer:

PBS with 50% glycerol, 0.05% Proclin300, 0.5% BSA, pH7.3

Aliquoting is unnecessary for -20°C storage

For technical support and original validation data for this product please contact:

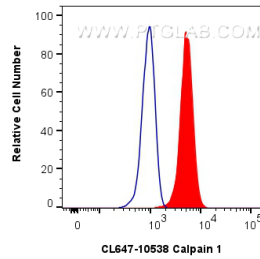
T: 4006900926

E: Proteintech-CN@ptglab.com

W: ptgcn.com

This product is exclusively available under Proteintech Group brand and is not available to purchase from any other manufacturer.

Selected Validation Data



1X10⁶ HeLa cells were intracellularly stained with 0.8 ug CoraLite® Plus 647 Anti-Human Calpain 1 (CL647-10538) (red), or 0.8 ug CoraLite® Plus 647-conjugated Rabbit IgG control Rabbit PolyAb (CL647-30000, Clone:) (blue). Cells were fixed with 4% PFA and permeabilized with Flow Cytometry Perm Buffer (PF00011-C).