

For Research Use Only

# CoraLite®594-conjugated Alpha smooth muscle actin specific Recombinant antibody



Catalog Number: CL594-80008

Featured Product

1 Publications

## Basic Information

Catalog Number:

CL594-80008

Concentration:

1000 ug/ml

Source:

Rabbit

Isotype:

IgG

GenBank Accession Number:

NM\_001613

GeneID (NCBI):

59

UNIPROT ID:

P62736

Full Name:

actin, alpha 2, smooth muscle, aorta

Calculated MW:

42 kDa

Observed MW:

42 kDa

Purification Method:

Protein A purification

CloneNo.:

5H7

Recommended Dilutions:

IF-P: 1:50-1:500

IF-Fro: 1:50-1:500

IF/ICC: 1:50-1:500

FC (Intra): 0.40 ug per 10<sup>6</sup> cells in a 100 µl suspension

Excitation/Emission maxima wavelengths:

588 nm / 604 nm

## Applications

Tested Applications:

IF/ICC, IF-P, IF-Fro, FC (Intra)

Cited Applications:

WB

Species Specificity:

human, mouse, rat, pig, chicken

Cited Species:

human

Positive Controls:

IF-P: mouse heart tissue,

IF-Fro: mouse small intestine tissue,

IF/ICC: H9C2 cells,

FC (Intra): C2C12 cells,

## Background Information

ACTA2 (also known as  $\alpha$ -smooth muscle actin or  $\alpha$ -SMA) belongs to the actin family. Actins are highly conserved proteins that are involved in various types of cell motility and are ubiquitously expressed in all eukaryotic cells. ACTA2 is primarily expressed in vascular smooth muscle and anti-ACTA2 is commonly used to marker smooth muscle cells.

## Notable Publications

Author	Pubmed ID	Journal	Application
Choon-Myung Lee	39557346	Toxicol Appl Pharmacol	WB

## Storage

Storage:

Store at -20°C. Avoid exposure to light. Stable for one year after shipment.

Storage Buffer:

PBS with 50% glycerol, 0.05% Proclin300, 0.5% BSA, pH7.3

Aliquoting is unnecessary for -20°C storage

For technical support and original validation data for this product please contact:

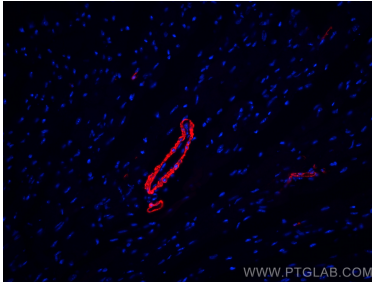
T: 4006900926

E: Proteintech-CN@ptglab.com

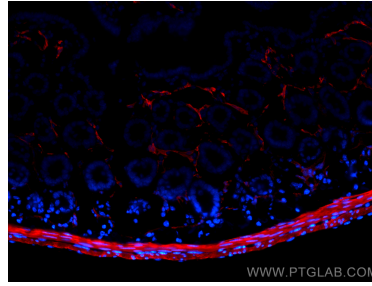
W: ptgcn.com

This product is exclusively available under Proteintech Group brand and is not available to purchase from any other manufacturer.

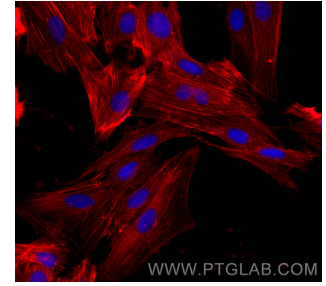
## Selected Validation Data



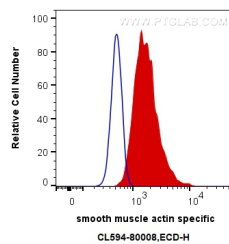
Immunofluorescent analysis of (4% PFA) fixed mouse heart tissue using CoraLite® 594 smooth muscle actin specific antibody (CL594-80008, Clone: 5H7) at dilution of 1:200.



Immunofluorescent analysis of (4% PFA) fixed frozen OCT-embedded mouse small intestine tissue using CoraLite® 594 Alpha smooth muscle actin specific antibody (CL594-80008, Clone: 5H7) at dilution of 1:200.



Immunofluorescent analysis of (-20°C Ethanol) fixed H9C2 cells using CoraLite® 594 smooth muscle actin specific antibody (CL594-80008, Clone: 5H7) at dilution of 1:200.



1X10<sup>6</sup> C2C12 cells were intracellularly stained with 0.4 ug CoraLite® 594 Anti-Human smooth muscle actin specific (CL594-80008, Clone: 5H7) (red), or 0.4 ug Control Antibody. Cells were fixed with 4% PFA and permeabilized with Flow Cytometry Perm Buffer (PF00011-C).