

For Research Use Only

CoraLite®594-conjugated GLUT4 Monoclonal antibody

Catalog Number: CL594-66846



Basic Information

Catalog Number:

CL594-66846

Concentration:

1000 ug/ml

Source:

Mouse

Isotype:

IgG2b

Immunogen Catalog Number:

AG15390

GenBank Accession Number:

BC069615

GeneID (NCBI):

6517

UNIPROT ID:

P14672

Full Name:

solute carrier family 2 (facilitated glucose transporter), member 4

Calculated MW:

509 aa, 55 kDa

Observed MW:

48-50 kDa

Purification Method:

Protein A purification

CloneNo.:

3G7C9

Recommended Dilutions:

IF/ICC: 1:50-1:500

FC (Intra): 0.40 ug per 10⁶ cells in a 100 µl suspension

Excitation/Emission maxima wavelengths:

588 nm / 604 nm

Applications

Tested Applications:

IF/ICC, FC (Intra)

Species Specificity:

human, mouse, rat, pig

Positive Controls:

IF/ICC : HeLa cells,

FC (Intra) : HEK-293 cells,

Background Information

GLUT4 is a member of GLUT family of transmembrane hexose transporters. It is an INS receptor that mediates INS-stimulated glucose transport in fat and muscle where it is predominantly expressed. In response to INS stimulation, GLUT4 experienced translocation from trans-Golgi network to plasma membrane. The impairment of GLUT4 translocation is associated with diabetes.

Storage

Storage:

Store at -20°C. Avoid exposure to light. Stable for one year after shipment.

Storage Buffer:

PBS with 50% glycerol, 0.05% Proclin300, 0.5% BSA, pH7.3

Aliquoting is unnecessary for -20°C storage

For technical support and original validation data for this product please contact:

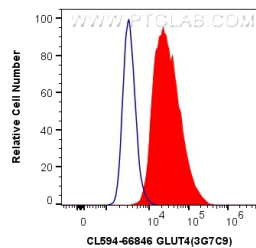
T: 4006900926

E: Proteintech-CN@ptglab.com

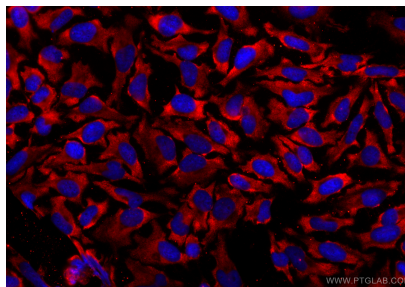
W: ptgcn.com

This product is exclusively available under Proteintech Group brand and is not available to purchase from any other manufacturer.

Selected Validation Data



1X10⁶ HEK-293 cells were intracellularly stained with 0.4 ug CoraLite® 594 Anti-Human GLUT4 (CL594-66846, Clone:3G7C9) (red), or 0.4 ug Mouse IgG2b Isotype Control (CL594-66360-3, Clone: K11B8C4B5) (blue). Cells were fixed with 4% PFA and permeabilized with Flow Cytometry Perm Buffer (PF00011-C).



Immunofluorescent analysis of (-20°C Ethanol) fixed HeLa cells using CoraLite® 594 GLUT4 antibody (CL594-66846, Clone: 3G7C9) at dilution of 1:200.