

For Research Use Only

CoraLite®594-conjugated NeuN Monoclonal antibody

Catalog Number: CL594-66836



Basic Information

Catalog Number:

CL594-66836

Concentration:

1000 ug/ml

Source:

Mouse

Isotype:

IgG1

Immunogen Catalog Number:

AG28016

GenBank Accession Number:

NM_001082575

GeneID (NCBI):

146713

UNIPROT ID:

A6NFN3

Full Name:

hexaribonucleotide binding protein 3

Purification Method:

Protein G purification

CloneNo.:

3A4C1

Recommended Dilutions:

IF-P: 1:50-1:500

Excitation/Emission maxima

wavelengths:

588 nm / 604 nm

Applications

Tested Applications:

IF-P

Species Specificity:

human, mouse, rat

Positive Controls:

IF-P: mouse cerebellum tissue, rat brain tissue

Background Information

NeuN, encoded by FOX3, is a neuron-specific nuclear protein. Anti-NeuN stains exclusively neuronal cells in the central and peripheral nervous systems, especially postmitotic and differentiating neurons, as well as terminally differentiated neurons. Anti-NeuN has been used widely as a reliable tool to detect most postmitotic neuronal cell types. The immunohistochemical staining is primarily localized in the nucleus of the neurons with lighter staining in the cytoplasm.

Storage

Storage:

Store at -20°C. Avoid exposure to light. Stable for one year after shipment.

Storage Buffer:

PBS with 50% glycerol, 0.05% Proclin300, 0.5% BSA, pH7.3

Aliquoting is unnecessary for -20°C storage

For technical support and original validation data for this product please contact:

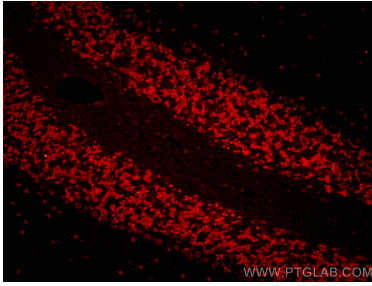
T: 4006900926

E: Proteintech-CN@ptglab.com

W: ptgcn.com

This product is exclusively available under Proteintech Group brand and is not available to purchase from any other manufacturer.

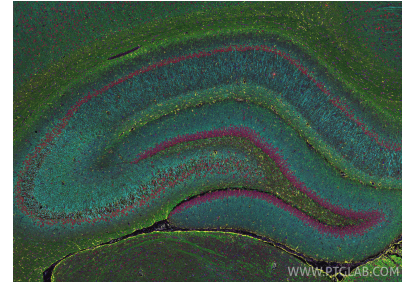
Selected Validation Data



Immunofluorescent analysis of (4% PFA) fixed mouse cerebellum tissue using CoraLite®594 NeuN antibody (CL594-66836, Clone: 3A4C1) at dilution of 1:200.



Immunofluorescent analysis of (4% PFA) fixed paraffin-embedded rat brain tissue using CoraLite®594 NeuN antibody (CL594-66836, Clone: 3A4C1) at dilution of 1:400, CoraLite® Plus 647 MAP2 antibody (CL647-84306-3, Clone: 241653E9, Magenta), CoraLite®532 GFAP antibody (CL532-81063, Clone: 4C6, golden), CoraLite® Plus 488 MBP antibody (CL488-10458, green). Heat mediated antigen retrieval with Tris-EDTA buffer (pH 9.0).



Immunofluorescent analysis of (4% PFA) fixed paraffin-embedded rat brain tissue using CoraLite®594 NeuN antibody (CL594-66836, Clone: 3A4C1) at dilution of 1:400, CoraLite® Plus 647 MAP2 antibody (CL647-84306-3, Clone: 241653E9, Magenta), CoraLite®532 GFAP antibody (CL532-81063, Clone: 4C6, golden), CoraLite® Plus 488 MBP antibody (CL488-10458, green). Heat mediated antigen retrieval with Tris-EDTA buffer (pH 9.0).