

For Research Use Only

CoraLite®594-conjugated KU70,XRCC6 Monoclonal antibody

Catalog Number:CL594-66607



Basic Information

Catalog Number:

CL594-66607

Concentration:

1000 µg/ml

Source:

Mouse

Isotype:

IgG1

Immunogen Catalog Number:

AG21301

GenBank Accession Number:

BC008343

GeneID (NCBI):

2547

UNIPROT ID:

P12956

Full Name:

X-ray repair complementing defective repair in Chinese hamster cells 6

Calculated MW:

75 kDa

Observed MW:

70 kDa

Purification Method:

Protein G purification

CloneNo.:

3C12D9

Recommended Dilutions:

WB: 1:500-1:1000

IF/ICC: 1:300-1:1200

FC (Intra): 0.40 µg per 10⁶ cells in a 100 µl suspension

Excitation/Emission maxima wavelengths:

588 nm / 604 nm

Applications

Tested Applications:

WB, IF/ICC, FC (Intra)

Species Specificity:

human, mouse, rat

Positive Controls:

WB : HEK-293 cells, HeLa cells, Jurkat cells, MCF-7 cells

IF/ICC : HeLa cells, HepG2 cells

FC (Intra) : HepG2 cells,

Background Information

X-ray repair cross-complementing protein 6(XRCC6)gene encodes subunit p70 of the p70/p80 autoantigen which has a role in DNA repair or transposition. DNA helicase II complex binds preferentially to fork-like ends of double-stranded DNA in a cell cycle-dependent manner, which may be mediated by XRCC6. XRCC6/5 can form a heterodimer, which function as a regulatory subunit of the DNA-dependent protein kinase complex DNA-PK by increasing the affinity of the catalytic subunit PRKDC to DNA, and also it can stabilize broken DNA ends and bringing them together. Otherwise, XRCC5/6 heterodimer together with APEX1 can negatively regulate of transcription.

Storage

Storage:

Store at -20°C. Avoid exposure to light. Stable for one year after shipment.

Storage Buffer:

PBS with 50% glycerol, 0.05% Proclin300, 0.5% BSA, pH7.3

Aliquoting is unnecessary for -20°C storage

For technical support and original validation data for this product please contact:

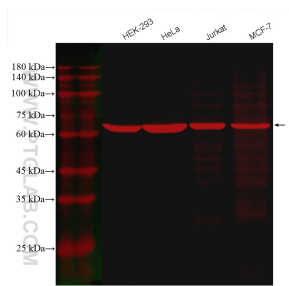
T: 4006900926

E: Proteintech-CN@ptglab.com

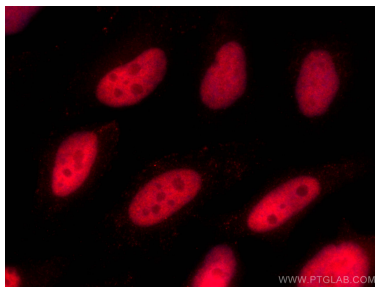
W: ptgcn.com

This product is exclusively available under Proteintech Group brand and is not available to purchase from any other manufacturer.

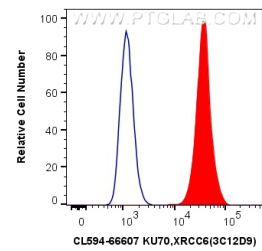
Selected Validation Data



Various lysates were subjected to SDS PAGE followed by western blot with CL594-66607 (KU70,XRCC6 antibody) at dilution of 1:500 incubated at room temperature for 1.5 hours.



Immunofluorescent analysis of (4% PFA) fixed HeLa cells using CoraLite@594 KU70,XRCC6 antibody (CL594-66607, Clone: 3C12D9) at dilution of 1:600.



1X10⁶ HepG2 cells were intracellularly stained with 0.4 ug CoraLite@594 Anti-Human KU70,XRCC6 (CL594-66607, Clone:3C12D9) (red), or 0.4 ug CoraLite@594 Mouse IgG1 Isotype Control (MOPC-21) (CL594-65124, Clone: MOPC-21) (blue). Cells were fixed and permeabilized with Transcription Factor Staining Buffer Kit (PF00011).