

For Research Use Only

# CoraLite®594-conjugated Annexin V Monoclonal antibody

Catalog Number: CL594-66245

Featured Product



## Basic Information

Catalog Number:

CL594-66245

Concentration:

1000 µg/ml

Source:

Mouse

Isotype:

IgG1

Immunogen Catalog Number:

AG1538

GenBank Accession Number:

BC001429

GeneID (NCBI):

308

UNIPROT ID:

P08758

Full Name:

annexin A5

Calculated MW:

36 kDa

Purification Method:

Protein G purification

CloneNo.:

1E6A8

Recommended Dilutions:

IF/ICC: 1:50-1:500

FC (Intra): 0.20 µg per 10<sup>6</sup> cells in a 100 µl suspension

Excitation/Emission maxima wavelengths:

588 nm / 604 nm

## Applications

Tested Applications:

IF/ICC, FC (Intra)

Species Specificity:

human

Positive Controls:

IF/ICC : HeLa cells,

FC (Intra) : HeLa cells,

## Background Information

Annexin A5 (ANXA5), is a member of the structurally related family of annexin proteins some of which have been implicated in membrane-related events along exocytotic and endocytotic pathways. Annexin 5 is a phospholipase A2 and protein kinase C inhibitory protein with calcium channel activity and a potential role in cellular signal transduction, inflammation, growth and differentiation. Annexin 5 has also been described as placental anticoagulant protein I, vascular anticoagulant-alpha, endonexin II, lipocortin V, placental protein 4 and anchorin CII. This antibody is conjugated with CL594, Ex/Em 593 nm/614 nm.

## Storage

Storage:

Store at -20°C. Avoid exposure to light. Stable for one year after shipment.

Storage Buffer:

PBS with 50% glycerol, 0.05% Proclin300, 0.5% BSA, pH7.3

Aliquoting is unnecessary for -20°C storage

For technical support and original validation data for this product please contact:

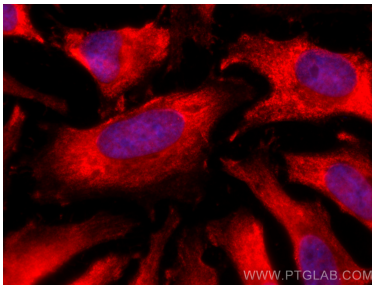
T: 4006900926

E: [Proteintech-CN@ptglab.com](mailto:Proteintech-CN@ptglab.com)

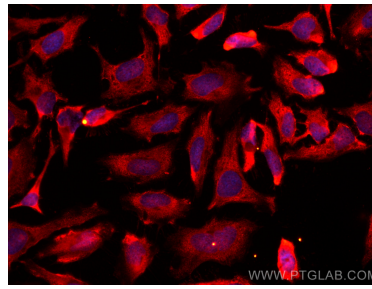
W: [ptgcn.com](http://ptgcn.com)

This product is exclusively available under Proteintech Group brand and is not available to purchase from any other manufacturer.

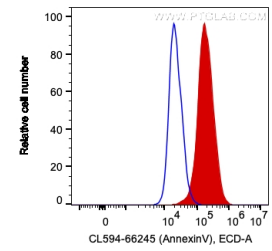
## Selected Validation Data



Immunofluorescent analysis of (-20°C Ethanol) fixed HeLa cells using CoraLite®594 Annexin V antibody (CL594-66245, Clone: 1E6A8 ) at dilution of 1:200.



Immunofluorescent analysis of (-20°C Ethanol) fixed HeLa cells using CoraLite®594 Annexin V antibody (CL594-66245, Clone: 1E6A8 ) at dilution of 1:200.



1X10<sup>6</sup> HeLa cells were intracellularly stained with 0.2 ug CoraLite®594 Anti-Human Annexin V (CL594-66245, Clone:1E6A8) (red), or 0.2 ug Mouse IgG1 Isotype Control (CL594-66360, Clone: T1F8D3F10) (blue). Cells were fixed with 4% PFA and permeabilized with Intracellular Staining Permeabilization Wash Buffer.