

For Research Use Only

# CoraLite®594-conjugated Beta Tubulin Monoclonal antibody

Catalog Number: CL594-66240

3 Publications



## Basic Information

Catalog Number:

CL594-66240

Concentration:

1000 µg/ml

Source:

Mouse

Isotype:

IgG2a

Immunogen Catalog Number:

AG0117

GenBank Accession Number:

BC000748

GeneID (NCBI):

10381

UNIPROT ID:

Q13509

Full Name:

tubulin, beta 3

Calculated MW:

450 aa, 50 kDa

Observed MW:

50-55 kDa

Purification Method:

Protein A purification

CloneNo.:

1D4A4

Recommended Dilutions:

IF/ICC: 1:50-1:500

FC (Intra): 0.40 µg per 10<sup>6</sup> cells in a 100 µl suspension

Excitation/Emission maxima wavelengths:

588 nm / 604 nm

## Applications

Tested Applications:

IF/ICC, FC (Intra)

Cited Applications:

IF

Species Specificity:

human, mouse, rat, pig, zebrafish, nematode

Positive Controls:

IF/ICC : SH-SY5Y cells,

FC (Intra) : HeLa cells,

## Background Information

There are five tubulins in human cells: alpha, beta, gamma, delta, and epsilon. Tubulins are conserved across species. They form heterodimers, which multimerize to form a microtubule filament. An alpha and beta tubulin heterodimer is the basic structural unit of microtubules. The heterodimer does not come apart, once formed. The alpha and beta tubulins, which are each about 55 kDa MW, are homologous but not identical. Alpha and beta tubulins have been widely used as loading controls. Tubulin expression may vary according to resistance to antimicrobial and antimetabolic drugs.

## Notable Publications

Author	Pubmed ID	Journal	Application
Sun K Kim	39314338	bioRxiv	IF
Wen Lu	37722034	Proc Natl Acad Sci U S A	IF
Wen Lu	36945460	bioRxiv	IF

## Storage

Storage:

Store at -20°C. Avoid exposure to light. Stable for one year after shipment.

Storage Buffer:

PBS with 50% glycerol, 0.05% Proclin300, 0.5% BSA, pH7.3

Aliquoting is unnecessary for -20°C storage

For technical support and original validation data for this product please contact:

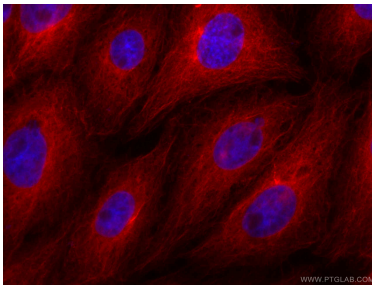
T: 4006900926

E: [Proteintech-CN@ptglab.com](mailto:Proteintech-CN@ptglab.com)

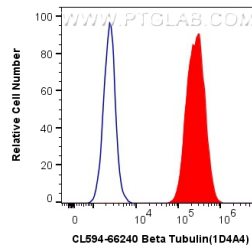
W: [ptgcn.com](http://ptgcn.com)

This product is exclusively available under Proteintech Group brand and is not available to purchase from any other manufacturer.

## Selected Validation Data



Immunofluorescent analysis of (4% PFA) fixed SH-SY5Y cells using the CoraLite®594-conjugated version of this antibody, CL594-66240 (beta Tubulin antibody), at dilution of 1:100.



1X10<sup>6</sup> HeLa cells were intracellularly stained with 0.4 ug CoraLite®594 Anti-Human Beta Tubulin (CL594-66240, Clone:1D4A4) (red), or 0.4 ug CoraLite®594 Mouse IgG2a Isotype Control (C1.18.4) (CL594-65208, Clone: C1.18.4) (blue). Cells were fixed with 4% PFA and permeabilized with Flow Cytometry Perm Buffer (PF00011-C).