

For Research Use Only

CoraLite®594-conjugated MSH6 Monoclonal antibody

Catalog Number: CL594-66172

Featured Product



Basic Information

Catalog Number:

CL594-66172

Concentration:

1000 µg/ml

Source:

Mouse

Isotype:

IgG2a

Immunogen Catalog Number:

AG12645

GenBank Accession Number:

BC004246

GeneID (NCBI):

2956

UNIPROT ID:

P52701

Full Name:

mutS homolog 6 (E. coli)

Calculated MW:

153 kDa

Purification Method:

Protein A purification

CloneNo.:

2E10B2

Recommended Dilutions:

FC (Intra): 0.40 µg per 10⁶ cells in a
100 µl suspension

Excitation/Emission maxima
wavelengths:

588 nm / 604 nm

Applications

Tested Applications:

FC (Intra)

Species Specificity:

human

Positive Controls:

FC (Intra) : HEK-293 cells,

Background Information

MSH6, also named as DNA mismatch repair protein Msh6 or GTMBP, is a 1360 amino acid protein, which contains one PWWP domain and belongs to the DNA mismatch repair MutS family. MSH6 localizes in the nucleus and is a component of the post-replicative DNA mismatch repair system. Msh2 and Msh6 form a protein complex required to repair mismatches generated during DNA replication.

Storage

Storage:

Store at -20°C. Avoid exposure to light. Stable for one year after shipment.

Storage Buffer:

PBS with 50% glycerol, 0.05% Proclin300, 0.5% BSA, pH7.3

Aliquoting is unnecessary for -20°C storage

For technical support and original validation data for this product please contact:

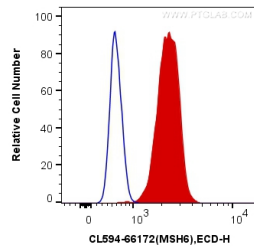
T: 4006900926

E: Proteintech-CN@ptglab.com

W: ptgcn.com

This product is exclusively available under Proteintech Group brand and is not available to purchase from any other manufacturer.

Selected Validation Data



1X10⁶ HEK-293 cells were intracellularly stained with 0.4 ug CoraLite® 594 Anti-Human MSH6 (CL594-66172, Clone:2E10B2) (red), or 0.4 ug Mouse IgG2a Isotype Control (CL594-66360-2, Clone: K11A1B2A2) (blue). Cells were fixed and permeabilized with Transcription Factor Staining Buffer Kit (PF00011).