

For Research Use Only

# CoraLite®594-conjugated Alpha cardiac muscle actin specific Monoclonal antibody



Catalog Number: CL594-66125

1 Publications

## Basic Information

Catalog Number:

CL594-66125

Concentration:

1000 ug/ml

Source:

Mouse

Isotype:

IgG1

GenBank Accession Number:

NM\_005159

GeneID (NCBI):

70

UNIPROT ID:

P68032

Full Name:

actin, alpha, cardiac muscle 1

Calculated MW:

42 kDa

Purification Method:

Protein G purification

CloneNo.:

1F2B9

Recommended Dilutions:

IF-P: 1:50-1:500

FC (Intra): 0.40 ug per 10<sup>6</sup> cells in a 100 µl suspension

Excitation/Emission maxima wavelengths:

588 nm / 604 nm

## Applications

Tested Applications:

IF-P, FC (Intra)

Cited Applications:

IF

Species Specificity:

human, mouse, rat, pig

Cited Species:

mouse

Positive Controls:

IF-P: mouse heart tissue,

FC (Intra): C2C12 cells,

## Background Information

Actins are highly conserved proteins that are involved in various types of cell motility and are ubiquitously expressed in all eukaryotic cells. The ACTC1 gene encodes cardiac muscle alpha-actin, the predominant actin isoform in adult heart, which interacts with a variety of proteins to produce the force for muscle contraction. This antibody is specific to the ACTC1. It does not cross-react with other actin isoforms. The antibody is conjugated with CL594, Ex/Em 593 nm/614 nm.

## Notable Publications

Author	Pubmed ID	Journal	Application
Wei Feng	40135575	J Am Heart Assoc	IF

## Storage

Storage:

Store at -20°C. Avoid exposure to light. Stable for one year after shipment.

Storage Buffer:

PBS with 50% glycerol, 0.05% Proclin300, 0.5% BSA, pH7.3

Aliquoting is unnecessary for -20°C storage

For technical support and original validation data for this product please contact:

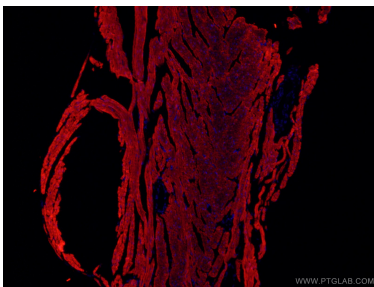
T: 4006900926

E: [Proteintech-CN@ptglab.com](mailto:Proteintech-CN@ptglab.com)

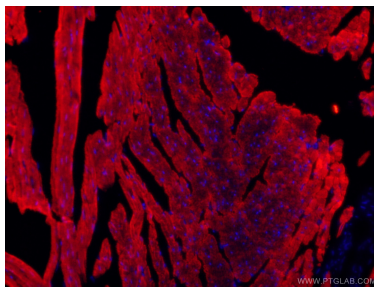
W: [ptgcn.com](http://ptgcn.com)

This product is exclusively available under Proteintech Group brand and is not available to purchase from any other manufacturer.

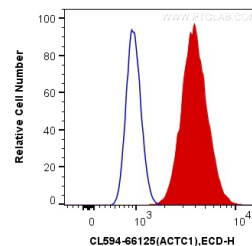
## Selected Validation Data



Immunofluorescent analysis of (4% PFA) fixed mouse heart tissue using CL594-66125 (ACTC1-specific antibody) at dilution of 1:100.



Immunofluorescent analysis of (4% PFA) fixed mouse heart tissue using CL594-66125 (ACTC1-specific antibody) at dilution of 1:100.



1X10<sup>6</sup> C2C12 cells were intracellularly stained with 0.4 ug CoraLite®594 Anti-Human ACTC1-specific (CL594-66125, Clone:1F2B9) (red), or 0.4 ug Mouse IgG1 Isotype Control (CL594-66360, Clone:T1F8D3F10) (blue). Cells were fixed with 4% PFA and permeabilized with Flow Cytometry Perm Buffer (PF00011-C).