

For Research Use Only

CoraLite®594 Anti-Mouse CD3 (17A2)

Catalog Number:CL594-65077



Basic Information

Catalog Number:

CL594-65077

Concentration:

100ug, 0.5 mg/ml

Source:

Rat

Isotype:

IgG2b, kappa

GenBank Accession Number:

BC098236

GeneID (NCBI):

12501

UNIPROT ID:

P22646

Full Name:

CD3 antigen, epsilon polypeptide

Purification Method:

Affinity purification

CloneNo.:

17A2

Recommended Dilutions:

FC: 0.25 ug per 10⁶ cells in a 100 µl suspension

Excitation/Emission maxima wavelengths:

588 nm / 604 nm

Applications

Tested Applications:

FC

Species Specificity:

mouse

Positive Controls:

FC : mouse splenocytes,

Background Information

CD3 is a multimeric protein associated with the T-cell receptor (TCR) to form a complex involved in antigen recognition and signal transduction (PMID: 15885124). CD3 is composed of CD3 γ , δ , ϵ , and ζ chains (PMID: 1826255). It is expressed by thymocytes in a developmentally regulated manner, T cells, and some NK cells (PMID: 3289580). The TCR recognizes antigens bound to major histocompatibility complex (MHC) molecules. TCR-mediated peptide-MHC recognition is transmitted to the CD3 complex, leading to the intracellular signal transduction (PMID: 11985657).

Storage

Storage:

Store at 2-8°C. Avoid exposure to light. Stable for one year after shipment.

Storage Buffer:

PBS with 0.09% sodium azide, pH7.3

For technical support and original validation data for this product please contact:

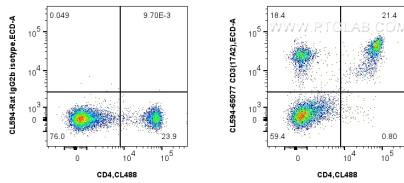
T: 4006900926

E: Proteintech-CN@ptglab.com

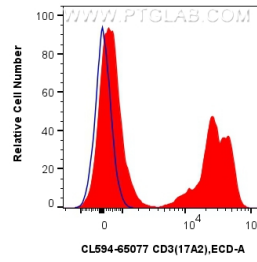
W: ptgcn.com

This product is exclusively available under Proteintech Group brand and is not available to purchase from any other manufacturer.

Selected Validation Data



1x10⁶ mouse splenocytes were surface stained with CoraLite® Plus 488 Anti-Mouse CD4, and 0.25 ug CoraLite®594 Anti-Mouse CD3 (17A2) (CL594-65077, Clone: 17A2) or CoraLite®594 Rat IgG2b Isotype Control (LTF-2) (CL594-65211, Clone: LTF-2). Cells were not fixed.



1x10⁶ mouse splenocytes were surface stained with 0.25 ug CoraLite®594 Anti-Mouse CD3 (17A2) (CL594-65077, Clone: 17A2) (red) or CoraLite®594 Rat IgG2b Isotype Control (LTF-2) (CL594-65211, Clone: LTF-2) (blue). Cells were not fixed.