

For Research Use Only

# CoraLite®594-conjugated GFAP Polyclonal antibody

Catalog Number: CL594-16825

Featured Product

1 Publications



## Basic Information

Catalog Number:

CL594-16825

Concentration:

1000 ug/ml

Source:

Rabbit

Isotype:

IgG

Immunogen Catalog Number:

AG10423

GenBank Accession Number:

BC013596

GeneID (NCBI):

2670

UNIPROT ID:

P14136

Full Name:

glial fibrillary acidic protein

Calculated MW:

432 aa, 50 kDa

Observed MW:

45-50 kDa

Purification Method:

Antigen affinity purification

Recommended Dilutions:

IF-P: 1:50-1:500

IF-Fro: 1:50-1:500

Excitation/Emission maxima  
wavelengths:

588 nm / 604 nm

## Applications

Tested Applications:

IF-P, IF-Fro

Cited Applications:

IF

Species Specificity:

human, mouse, rat

Cited Species:

mouse

Positive Controls:

IF-P: rat brain tissue, mouse brain tissue, rat  
cerebellum tissue

IF-Fro: rat brain tissue,

## Background Information

GFAP (Glial fibrillary acidic protein), an intermediate-filament (IF) protein, is specifically expressed in cells of astroglial lineage and is widely used to mark astroglia in the brain. It is also used as a marker for intracranial and intraspinal tumors arising from astrocytes.

## Notable Publications

Author	Pubmed ID	Journal	Application
Yuewen Zhai	40434197	Adv Mater	IF

## Storage

Storage:

Store at -20°C. Avoid exposure to light. Stable for one year after shipment.

Storage Buffer:

PBS with 50% glycerol, 0.05% Proclin300, 0.5% BSA, pH7.3

Aliquoting is unnecessary for -20°C storage

For technical support and original validation data for this product please contact:

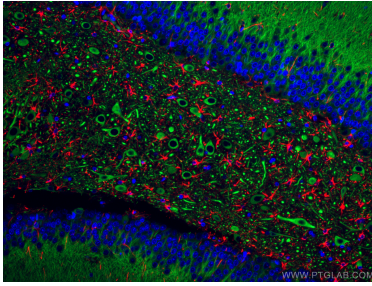
T: 4006900926

E: [Proteintech-CN@ptglab.com](mailto:Proteintech-CN@ptglab.com)

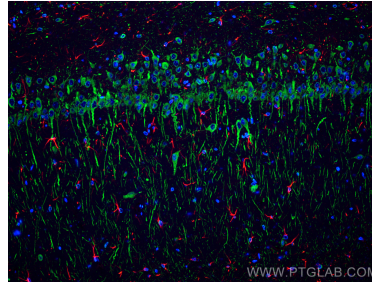
W: [ptgcn.com](http://ptgcn.com)

This product is exclusively available under Proteintech Group brand and is not available to purchase from any other manufacturer.

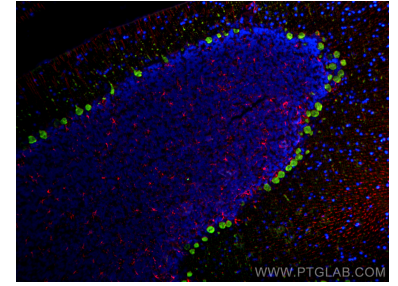
## Selected Validation Data



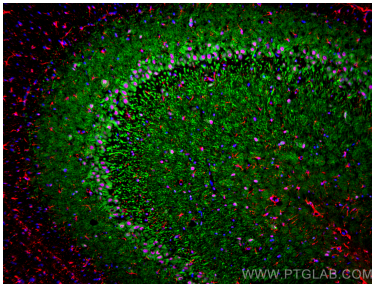
Immunofluorescent analysis of (4% PFA) fixed rat brain tissue using CoraLite®594 GFAP antibody (CL594-16825) at dilution of 1:200, CoraLite®488 MAP2 antibody (CL488-17490, green). DAPI (blue).



Immunofluorescent analysis of (4% PFA) fixed paraffin-embedded rat brain tissue using CoraLite®594 GFAP antibody (CL594-16825) at dilution of 1:200, CoraLite® Plus 488 MAP2 antibody (CL488-17490, green). Heat mediated antigen retrieval with Tris-EDTA buffer (pH 9.0).



Immunofluorescent analysis of (4% PFA) fixed paraffin-embedded rat cerebellum tissue using CoraLite®594 GFAP antibody (CL594-16825) at dilution of 1:200, Calbindin-D28k antibody (14479-1-AP, green). Heat mediated antigen retrieval with Tris-EDTA buffer (pH 9.0).



Immunofluorescent analysis of (4% PFA) fixed frozen OCT-embedded rat brain tissue using CoraLite®594 GFAP antibody (CL594-16825) at dilution of 1:200, MAP2 antibody (67015-1-Ig, Clone: 1C3E6, green), TDP-43 antibody (10782-2-AP, Magenta).