

For Research Use Only

CoraLite® Plus 488-conjugated MAP2 Monoclonal antibody

Catalog Number: CL488-67015



Basic Information

Catalog Number:

CL488-67015

Concentration:

1000 µg/ml

Source:

Mouse

Isotype:

IgG2b

Immunogen Catalog Number:

AG11349

GenBank Accession Number:

BC038857

GeneID (NCBI):

4133

UNIPROT ID:

P11137

Full Name:

microtubule-associated protein 2

Calculated MW:

200 kDa

Purification Method:

Protein A purification

CloneNo.:

1C3E6

Recommended Dilutions:

IF-P: 1:50-1:500

FC (Intra): 0.40 µg per 10⁶ cells in a 100 µl suspension

Excitation/Emission maxima wavelengths:

493 nm / 522 nm

Applications

Tested Applications:

IF-P, FC (Intra)

Species Specificity:

human, mouse, rat

Positive Controls:

IF-P: rat brain tissue,

FC (Intra): Neuro-2a cells,

Background Information

MAP2 (microtubule-associated protein 2) is a cytoskeleton protein abundant in brain and has important role in neuronal morphogenesis. Multiple high molecular weight (MW) and low molecular weight (MW) MAP2 isoforms are expressed within axons, dendrites, and cell bodies. The expression of MAP2 is regulated in both a tissue- and developmentally specific manner. MAP2 antibodies have been widely used to mark the neuron or dendrite formation.

Storage

Storage:

Store at -20°C. Avoid exposure to light. Stable for one year after shipment.

Storage Buffer:

PBS with 50% glycerol, 0.05% Proclin300, 0.5% BSA, pH7.3

Aliquoting is unnecessary for -20°C storage

For technical support and original validation data for this product please contact:

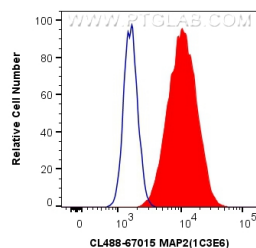
T: 4006900926

E: Proteintech-CN@ptglab.com

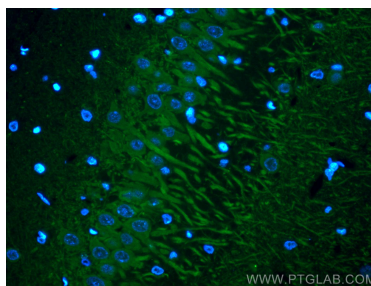
W: ptgcn.com

This product is exclusively available under Proteintech Group brand and is not available to purchase from any other manufacturer.

Selected Validation Data



1X10⁶ Neuro-2a cells were intracellularly stained with 0.4 ug CoraLite® Plus 488 Anti-Human MAP2 (CL488-67015, Clone:1C3E6) (red), or 0.4 ug CoraLite® Plus 488 Mouse IgG2b Isotype Control (MPC-11) (CL488-65128, Clone: MPC-11) (blue). Cells were fixed with 4% PFA and permeabilized with Flow Cytometry Perm Buffer (PF00011-C).



Immunofluorescent analysis of (4% PFA) fixed rat brain tissue using CoraLite® Plus 488 MAP2 antibody (CL488-67015, Clone: 1C3E6) at dilution of 1:200.