

For Research Use Only

CoraLite® Plus 488-conjugated TLR5 Monoclonal antibody

Catalog Number: CL488-66570



Basic Information

Catalog Number:

CL488-66570

Concentration:

1000 µg/ml

Source:

Mouse

Isotype:

IgG1

Immunogen Catalog Number:

AG13840

GenBank Accession Number:

BC109119

GeneID (NCBI):

7100

UNIPROT ID:

O60602

Full Name:

toll-like receptor 5

Calculated MW:

858 aa, 98 kDa

Observed MW:

100 kDa

Purification Method:

Protein G purification

CloneNo.:

4B3D2

Recommended Dilutions:

FC (Intra): 0.80 µg per 10⁶ cells in a 100 µl suspension

Excitation/Emission maxima wavelengths:

493 nm / 522 nm

Applications

Tested Applications:

FC (Intra)

Species Specificity:

Human, Pig, Mouse, Rat

Positive Controls:

FC (Intra) : THP-1 cells,

Background Information

TLR5 belongs to the Toll-like receptor family which are important in the innate immune response to pathogens. TLRs are highly conserved from Drosophila to humans and share structural and functional similarities. TLR5 is known to recognize bacterial flagellin from invading mobile bacteria. TLR5 acts via MYD88 and TRAF6, leading to NF-κB activation, cytokine secretion and the inflammatory response. Mutations in TLR5 gene have been associated with both resistance and susceptibility to systemic lupus erythematosus, and susceptibility to Legionnaire disease.

Storage

Storage:

Store at -20°C. Avoid exposure to light. Stable for one year after shipment.

Storage Buffer:

PBS with 50% glycerol, 0.05% Proclin300, 0.5% BSA, pH7.3

Aliquoting is unnecessary for -20°C storage

For technical support and original validation data for this product please contact:

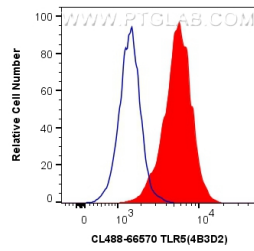
T: 4006900926

E: Proteintech-CN@ptglab.com

W: ptgcn.com

This product is exclusively available under Proteintech Group brand and is not available to purchase from any other manufacturer.

Selected Validation Data



1X10⁶ THP-1 cells were intracellularly stained with 0.8 ug CoraLite® Plus 488 Anti-Human TLR5 (CL488-66570, Clone:4B3D2) (red), or 0.8 ug CoraLite® Plus 488 Mouse IgG1 Isotype Control (MOPC-21) (CL488-65124, Clone: MOPC-21) (blue). Cells were fixed with 4% PFA and permeabilized with Flow Cytometry Perm Buffer (PF00011-C).