

For Research Use Only

CoraLite® Plus 488-conjugated Beta Catenin Monoclonal antibody

Catalog Number: CL488-66379

Featured Product



Basic Information

Catalog Number:

CL488-66379

Concentration:

1000 ug/ml

Source:

Mouse

Isotype:

IgG1

GenBank Accession Number:

NM_001904

GeneID (NCBI):

1499

ENSEMBL Gene ID:

ENSG00000168036

UNIPROT ID:

P35222

Full Name:

catenin (cadherin-associated protein),
beta 1, 88kDa

Calculated MW:

781 aa, 86 kDa

Purification Method:

Protein G purification

CloneNo.:

1B8A1

Recommended Dilutions:

IF/ICC: 1:50-1:500

FC (Intra): 0.40 ug per 10⁶ cells in a
100 µl suspension

Excitation/Emission maxima
wavelengths:

493 nm / 522 nm

Applications

Tested Applications:

IF/ICC, FC (Intra)

Species Specificity:

human, mouse, rat, pig

Positive Controls:

IF/ICC : MCF-7 cells,

FC (Intra) : MCF-7 cells,

Background Information

β-Catenin, also known as CTNNB1, is an evolutionarily conserved, multifunctional intracellular protein. β-Catenin was originally identified in cell adherens junctions (AJs) where it functions to bridge the cytoplasmic domain of cadherins to α-catenin and the actin cytoskeleton. Besides its essential role in the AJs, β-catenin is also a key downstream component of the canonical Wnt pathway that plays diverse and critical roles in embryonic development and adult tissue homeostasis. The Wnt/β-catenin pathway is also involved in the activation of other intracellular messengers such as calcium fluxes, JNK, and SRC kinases. Deregulation of β-catenin activity is associated with multiple diseases including cancers. (PMID: 22617422; 18334222) This antibody is conjugated with CL488(Ex/Em 488 nm/515 nm).

Storage

Storage:

Store at -20°C. Avoid exposure to light. Stable for one year after shipment.

Storage Buffer:

PBS with 50% glycerol, 0.05% Proclin300, 0.5% BSA, pH7.3

Aliquoting is unnecessary for -20°C storage

For technical support and original validation data for this product please contact:

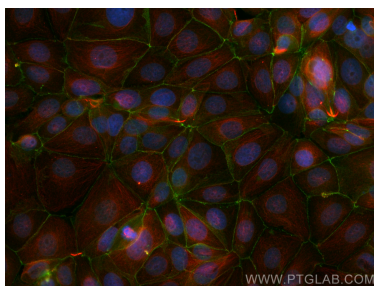
T: 4006900926

E: Proteintech-CN@ptglab.com

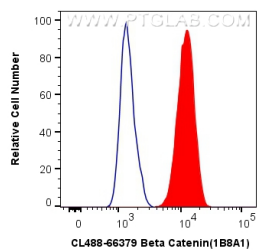
W: ptgcn.com

This product is exclusively available under Proteintech Group brand and is not available to purchase from any other manufacturer.

Selected Validation Data



Immunofluorescent analysis of (4% PFA) fixed MCF-7 cells using CoraLite® Plus 488 Beta Catenin antibody (CL488-66379, Clone: 1B8A1) at dilution of 1:200, Alpha Tubulin antibody (11224-1-AP, red).



1X10⁶ MCF-7 cells were intracellularly stained with 0.4 ug CoraLite® Plus 488 Anti-Human Beta Catenin (CL488-66379, Clone:1B8A1) (red), or 0.4 ug CoraLite® Plus 488 Mouse IgG1 Isotype Control (MOPC-21) (CL488-65124, Clone: MOPC-21) (blue). Cells were fixed with 4% PFA and permeabilized with Flow Cytometry Perm Buffer (PF00011-C).