

For Research Use Only

CoraLite® Plus 488 Mouse IgG2b isotype control (11B8C4)

Catalog Number: CL488-66360-3



Basic Information

Catalog Number:

CL488-66360-3

Concentration:

100ug, 200 µg/ml

Source:

Mouse

Isotype:

IgG2b

GenBank Accession Number:

GeneID (NCBI):

Full Name:

Purification Method:

Protein A purification

CloneNo.:

11B8C4

Recommended Dilutions:

FC (Intra): 0.4 ug per 10⁶ cells in 100 µl suspension

FC:

Excitation/Emission maxima wavelengths:

493 nm / 522 nm

Applications

Tested Applications:

FC

Species Specificity:

Megathura crenulata

Positive Controls:

FC (Intra): ,

FC : ,

Background Information

This antibody is used as the isotype control of mouse IgG2b. It can be used as the isotype control in Flow Cytometry and other experiments. The immunogen of this antibody is Keyhole Limpet Hemocyanin (KLH).

0.05-0.2 ug per test is suggested for FC experiment.

Storage

Storage:

Store at 2-8°C. Avoid exposure to light. Stable for one year after shipment.

Storage Buffer:

PBS with 0.09% sodium azide and 0.5% BSA, pH7.3

For technical support and original validation data for this product please contact:

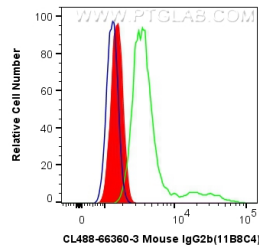
T: 4006900926

E: Proteintech-CN@ptglab.com

W: ptgcn.com

This product is exclusively available under Proteintech Group brand and is not available to purchase from any other manufacturer.

Selected Validation Data



1X10⁶ HeLa cells were intracellularly stained with 0.4 ug Coralite® Plus 488 Mouse IgG2b isotype control (CL488-66360-3, Clone:11B8C4) (red), or 0.4 ug Coralite® Plus 488-conjugated Beta Actin Monoclonal antibody (green) or unstained (blue). Cells were fixed with 4% PFA and permeabilized with Flow Cytometry Perm Buffer (PF00011-C).