

For Research Use Only

CoraLite® Plus 488-conjugated S100A10 Monoclonal antibody

Catalog Number: CL488-66227

1 Publications



Basic Information

Catalog Number: CL488-66227	GenBank Accession Number: BC015973	Purification Method: Protein G purification
Concentration: 1000 µg/ml	GeneID (NCBI): 6281	CloneNo.: 1B3F9
Source: Mouse	UNIPROT ID: P60903	Recommended Dilutions: IF/ICC: 1:50-1:500
Isotype: IgG1	Full Name: S100 calcium binding protein A10	Excitation/Emission maxima wavelengths: 493 nm / 522 nm
Immunogen Catalog Number: AG23596	Calculated MW: 11 kDa	

Applications

Tested Applications: IF/ICC	Positive Controls: IF/ICC : A431 cells, Saos-2 cells
Species Specificity: human	
Cited Species: mouse	

Background Information

S100A10, also known as p11, is a member of the S100 family of small, EF hand containing dimeric proteins. S100 proteins are localized in the cytoplasm and/or nucleus of a wide range of cells, and involved in the regulation of a number of cellular processes such as cell cycle progression and differentiation. S100A10 is present on the surface of endothelial and other cells in a heterotetrameric complex with another Ca(2+)-binding protein, annexin II. S100A10 may function in exocytosis and endocytosis.

Notable Publications

Author	Pubmed ID	Journal	Application
Yuewen Zhai	40434197	Adv Mater	

Storage

Storage:
Store at -20°C. Avoid exposure to light. Stable for one year after shipment.
Storage Buffer:
PBS with 50% glycerol, 0.05% Proclin300, 0.5% BSA, pH7.3
Aliquoting is unnecessary for -20°C storage

For technical support and original validation data for this product please contact:

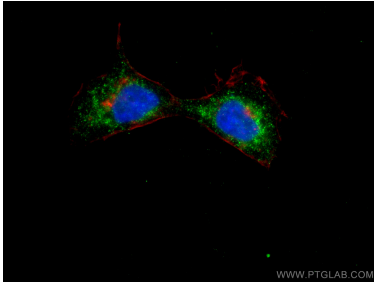
T: 4006900926

E: Proteintech-CN@ptglab.com

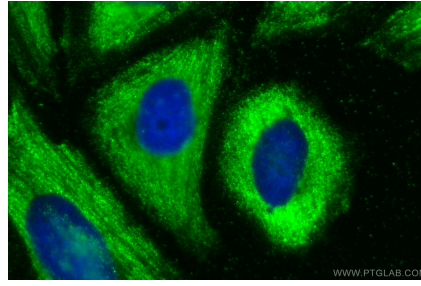
W: ptgcn.com

This product is exclusively available under Proteintech Group brand and is not available to purchase from any other manufacturer.

Selected Validation Data



Immunofluorescent analysis of (4% PFA) fixed A431 cells using CoraLite®@488 S100A10 antibody (CL488-66227, Clone: 1B3F9) at dilution of 1:200, CL594-Phalloidin (red).



Immunofluorescent analysis of (-20°C Methanol) fixed Saos-2 cells using CoraLite® Plus 488 S100A10 antibody (CL488-66227, Clone: 1B3F9) at dilution of 1:200.