

For Research Use Only

# CoraLite® Plus 488-conjugated ERK1/2 Monoclonal antibody

Catalog Number: CL488-66192



## Basic Information

Catalog Number:

CL488-66192

Concentration:

1000 µg/ml

Source:

Mouse

Isotype:

IgG1

Immunogen Catalog Number:

AG20350

GenBank Accession Number:

BC013992

GeneID (NCBI):

5595

UNIPROT ID:

P27361

Full Name:

mitogen-activated protein kinase 3

Calculated MW:

43 kDa

Purification Method:

Protein G purification

CloneNo.:

4G8A11

Recommended Dilutions:

IF/ICC: 1:50-1:500

FC (Intra): 0.40 µg per 10<sup>6</sup> cells in a 100 µl suspension

Excitation/Emission maxima wavelengths:

493 nm / 522 nm

## Applications

Tested Applications:

IF/ICC, FC (Intra)

Species Specificity:

human, mouse

Positive Controls:

IF/ICC : HeLa cells,

FC (Intra) : HepG2 cells,

## Background Information

ERK1 and ERK2 belongs to the protein kinase superfamily. It is involved in both the initiation and regulation of meiosis, mitosis, and postmitotic functions in differentiated cells by phosphorylating a number of transcription factors such as ELK-1. ERK1/2 catalyzed the reaction: ATP + a protein = ADP + a phosphoprotein. It is activated by tyrosine phosphorylation in response to INS and NGF. The antibody is conjugated with CL488, Ex/Em 488 nm/515 nm.

## Storage

Storage:

Store at -20°C. Avoid exposure to light. Stable for one year after shipment.

Storage Buffer:

PBS with 50% glycerol, 0.05% Proclin300, 0.5% BSA, pH7.3

Aliquoting is unnecessary for -20°C storage

For technical support and original validation data for this product please contact:

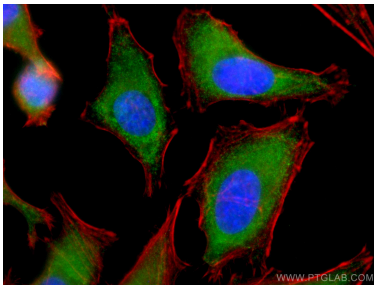
T: 4006900926

E: [Proteintech-CN@ptglab.com](mailto:Proteintech-CN@ptglab.com)

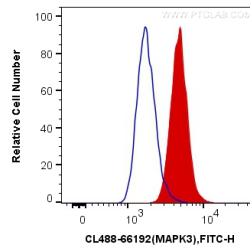
W: [ptgcn.com](http://ptgcn.com)

This product is exclusively available under Proteintech Group brand and is not available to purchase from any other manufacturer.

## Selected Validation Data



Immunofluorescent analysis of (-20°C Ethanol) fixed HeLa cells using Coralite® Plus 488 ERK1/2 antibody (CL488-66192, Clone: 4G8A11 ) at dilution of 1:100, (CL594-Phalloidin, red).



1X10<sup>6</sup> HepG2 cells were intracellularly stained with 0.4 ug Coralite® Plus 488 Anti-Human ERK1/2 (CL488-66192, Clone:4G8A11) (red), or 0.4 ug Mouse IgG1 Isotype Control (CL488-66360, Clone: T1F8D3F10) (blue). Cells were fixed with 4% PFA and permeabilized with Flow Cytometry Perm Buffer (PF00011-C).