

For Research Use Only

CoraLite®488-conjugated MSH6 Monoclonal antibody

Catalog Number: CL488-66172

Featured Product



Basic Information

Catalog Number:

CL488-66172

Concentration:

1000 µg/ml

Source:

Mouse

Isotype:

IgG2a

Immunogen Catalog Number:

AG12645

GenBank Accession Number:

BC004246

GeneID (NCBI):

2956

UNIPROT ID:

P52701

Full Name:

mutS homolog 6 (E. coli)

Calculated MW:

153 kDa

Purification Method:

Protein A purification

CloneNo.:

2E10B2

Recommended Dilutions:

FC (Intra): 0.80 µg per 10⁶ cells in a 100 µl suspension

FC: 0.80 µg per 10⁶ cells in a 100 µl suspension

Excitation/Emission maxima wavelengths:

491 nm / 516 nm

Applications

Tested Applications:

FC (Intra)

Species Specificity:

human

Positive Controls:

FC (Intra): HEK-293 cells,

FC: HEK-293 cells,

Background Information

MSH6, also named as DNA mismatch repair protein Msh6 or GTMBP, is a 1360 amino acid protein, which contains one PWWP domain and belongs to the DNA mismatch repair MutS family. MSH6 localizes in the nucleus and is a component of the post-replicative DNA mismatch repair system. Msh2 and Msh6 form a protein complex required to repair mismatches generated during DNA replication.

Storage

Storage:

Store at -20°C. Avoid exposure to light. Stable for one year after shipment.

Storage Buffer:

PBS with 50% glycerol, 0.05% Proclin300, 0.5% BSA, pH7.3

Aliquoting is unnecessary for -20°C storage

For technical support and original validation data for this product please contact:

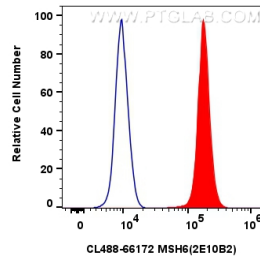
T: 4006900926

E: Proteintech-CN@ptglab.com

W: ptgcn.com

This product is exclusively available under Proteintech Group brand and is not available to purchase from any other manufacturer.

Selected Validation Data



1×10^6 HEK-293 cells were intracellularly stained with 0.8 μ g CoraLite®488 Anti-Human MSH6 (CL488-66172, Clone:2E10B2)(red), or 0.8 μ g Mouse IgG2a isotype control Mouse McAb (66360-2-Ig, Clone: 11A1B2) (blue). Cells were fixed and permeabilized with True-Nuclear Transcription Factor Buffer Set.