

For Research Use Only

CoraLite® Plus 488-conjugated IFITM2-specific Monoclonal antibody

Catalog Number: CL488-66137

Featured Product



Basic Information

Catalog Number:

CL488-66137

Concentration:

1000 µg/ml

Source:

Mouse

Isotype:

IgG1

GenBank Accession Number:

NM_006435

GeneID (NCBI):

10581

UNIPROT ID:

Q01629

Full Name:

interferon induced transmembrane protein 2 (1-8D)

Observed MW:

15 kDa

Purification Method:

Protein A purification

CloneNo.:

3D5F7

Recommended Dilutions:

FC (Intra): 0.40 µg per 10⁶ cells in a 100 µl suspension

FC: 0.40 µg per 10⁶ cells in a 100 µl suspension

Excitation/Emission maxima wavelengths:

493 nm / 522 nm

Applications

Tested Applications:

FC (Intra)

Species Specificity:

human

Positive Controls:

FC (Intra): HeLa cells,

FC: HeLa cells,

Background Information

IFITM2, also named as 1-8D, belongs to the CD225 family. It is an IFN-induced antiviral protein that mediates cellular innate immunity to at least three major human pathogens, namely influenza A H1N1 virus, West Nile virus (WNV), and dengue virus (WNV), by inhibiting the early step(s) of replication. IFITM2 induces cell cycle arrest and mediates apoptosis by caspase activation and in p53-independent manner. It is overexpressed in colon carcinoma. IFITM2 is a novel pro-apoptotic gene that will provide new insights into the regulated cellular pathways to death. (PMID:19544527) This antibody is specific to IFITM2.

Storage

Storage:

Store at -20°C. Avoid exposure to light. Stable for one year after shipment.

Storage Buffer:

PBS with 50% glycerol, 0.05% Proclin300, 0.5% BSA, pH7.3

Aliquoting is unnecessary for -20°C storage

For technical support and original validation data for this product please contact:

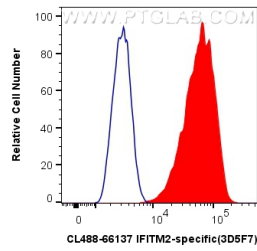
T: 4006900926

E: Proteintech-CN@ptglab.com

W: ptgcn.com

This product is exclusively available under Proteintech Group brand and is not available to purchase from any other manufacturer.

Selected Validation Data



1X10⁶ HeLa cells were intracellularly stained with 0.4 ug Coralite® Plus 488 Anti-Human IFITM2-specific (CL488-66137, Clone:3D5F7) (red), or 0.4 ug Control Antibody. Cells were fixed with 4% PFA and permeabilized with Flow Cytometry Perm Buffer (PF00011-C).