

For Research Use Only

CoraLite® Plus 488-conjugated RAC1 Monoclonal antibody

Catalog Number: CL488-66122

Featured Product

2 Publications



Basic Information

Catalog Number:

CL488-66122

Concentration:

1000 µg/ml

Source:

Mouse

Isotype:

IgG2b

Immunogen Catalog Number:

AG17779

GenBank Accession Number:

BC004247

GeneID (NCBI):

5879

UNIPROT ID:

P63000

Full Name:

ras-related C3 botulinum toxin substrate 1 (rho family, small GTP binding protein Rac1)

Calculated MW:

21 kDa

Observed MW:

21 kDa

Purification Method:

Protein A purification

CloneNo.:

4A4B11

Recommended Dilutions:

IF/ICC: 1:50-1:500

Excitation/Emission maxima wavelengths:

493 nm / 522 nm

Applications

Tested Applications:

IF/ICC

Cited Applications:

IF

Species Specificity:

human, mouse, rat

Cited Species:

human

Positive Controls:

IF/ICC : HeLa cells,

Background Information

RAC1b, also named as TC25, belongs to the small GTPase superfamily and Rho family. RAC1 is a plasma membrane-associated small GTPase which cycles between active GTP-bound and inactive GDP-bound states. In its active state, it binds to a variety of effector proteins to regulate cellular responses such as secretory processes, phagocytosis of apoptotic cells, epithelial cell polarization and growth-factor induced formation of membrane ruffles.

Notable Publications

Author	Pubmed ID	Journal	Application
Huiyi Tang	33122632	Cell Death Dis	IF
Zijie Wang	37189178	Stem Cell Res Ther	

Storage

Storage:

Store at -20°C. Avoid exposure to light. Stable for one year after shipment.

Storage Buffer:

PBS with 50% glycerol, 0.05% Proclin300, 0.5% BSA, pH7.3

Aliquoting is unnecessary for -20°C storage

For technical support and original validation data for this product please contact:

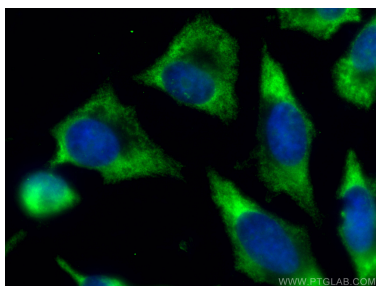
T: 4006900926

E: Proteintech-CN@ptglab.com

W: ptgcn.com

This product is exclusively available under Proteintech Group brand and is not available to purchase from any other manufacturer.

Selected Validation Data



Immunofluorescent analysis of (-20°C Ethanol) fixed HeLa cells using Coralite® Plus 488-conjugated RAC1 antibody (CL488-66122, Clone: 4A4B11) at dilution of 1:100.