

For Research Use Only

CoraLite® Plus 488 Anti-Human CD25/IL-2RA (BC96)

Catalog Number: CL488-65096



Basic Information

Catalog Number:

CL488-65096

Concentration:

100 tests, 5 µl/test

Source:

Mouse

Isotype:

IgG1, kappa

GenBank Accession Number:

BC156627

GeneID (NCBI):

3559

UNIPROT ID:

P01589

Full Name:

interleukin 2 receptor, alpha

Calculated MW:

272 aa, 31 kDa

Purification Method:

Affinity purification

CloneNo.:

BC96

Recommended Dilutions:

FC: 5 µl per 10⁶ cells in a 100 µl suspension

Excitation/Emission maxima wavelengths:

493 nm / 522 nm

Applications

Tested Applications:

FC

Species Specificity:

human

Positive Controls:

FC : human PBMCs,

Background Information

Proliferation of T lymphocytes is triggered by the interaction of IL-2 with its specific receptor following T lymphocyte activation. The receptor for IL-2 has three forms, generated by different combinations of three different proteins, the alpha chain (IL-2R alpha), the beta chain (IL-2R beta), and the gamma chain (IL-2R gamma) (PMID: 8476561). IL-2R alpha (also known as CD25) is a type I transmembrane protein present on activated T cells, activated B cells, some thymocytes, myeloid precursors, and oligodendrocytes. CD25 is also found on natural CD4⁺Foxp3⁺ Treg cells and a subset of human CD4⁺ memory T cells (PMID: 22585674).

Storage

Storage:

Store at 2-8°C. Avoid exposure to light. Stable for one year after shipment.

Storage Buffer:

PBS with 0.09% sodium azide and 0.5% BSA, pH7.3

For technical support and original validation data for this product please contact:

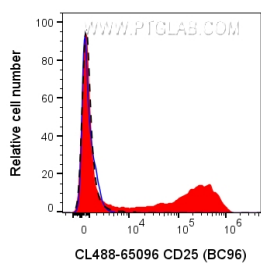
T: 4006900926

E: Proteintech-CN@ptglab.com

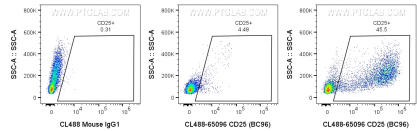
W: ptgcn.com

This product is exclusively available under Proteintech Group brand and is not available to purchase from any other manufacturer.

Selected Validation Data



1x10⁶ CD3/CD28 activated (3 day) human PBMCs were surface stained with 5 ul CoraLite® Plus 488 Anti-Human CD25/IL-2RA (CL488-65096, Clone: BC96) (red) or CoraLite® Plus 488 Mouse IgG1 Isotype Control (CL488-65124, Clone: MOPC-21) (blue). 1x10⁶ unactivated human PBMCs were surface stained with 5 ul CoraLite® Plus 488 Anti-Human CD25/IL-2RA (CL488-65096, Clone: BC96) (black dashed). Cells were not fixed. Cells were treated with Fc Receptor



1x10⁶ CD3/CD28 activated (3 day) human PBMCs were surface stained with 5 ul CoraLite® Plus 488 Anti-Human CD25/IL-2RA (CL488-65096, Clone: BC96) (right) or CoraLite® Plus 488 Mouse IgG1 Isotype Control (CL488-65124, Clone: MOPC-21) (left). 1x10⁶ unactivated human PBMCs were surface stained with 5 ul CoraLite® Plus 488 Anti-Human CD25/IL-2RA (CL488-65096, Clone: BC96) (center). Cells were not fixed. Cells were treated with Fc Receptor Block