

For Research Use Only

# CoraLite® Plus 488 Anti-Human PD-L1/CD274 (29E.2A3)

Catalog Number:CL488-65081



## Basic Information

Catalog Number:

CL488-65081

Concentration:

100tests, 5 ul/test

Source:

Mouse

Isotype:

IgG2b, kappa

GenBank Accession Number:

BC069381

GeneID (NCBI):

29126

UNIPROT ID:

Q9NZQ7

Full Name:

CD274 molecule

Purification Method:

Affinity purification

CloneNo.:

29E.2A3

Recommended Dilutions:

FC: 5 ul per 10<sup>6</sup> cells in 100 µl suspension

Excitation/Emission maxima wavelengths:

493 nm / 522 nm

## Applications

Tested Applications:

FC

Species Specificity:

human

Positive Controls:

FC : PHA treated human PBMCs,

## Background Information

Programmed cell death ligand 1 (PD-L1, CD274, or B7-H1), is the first member of B7 family to be discovered. B7 family molecules are type I transmembrane proteins belonging to the immunoglobulin superfamily. In concert with their CD28 family receptors, the B7s are key regulators of the adaptive immune response. PD-L1 is suggested as a negative regulator of T and B cell, and plays important role in mediating tolerance of lymphocytes to self-antigens. It is also involved in the costimulatory signal, essential for T-cell proliferation and production of IL10 and IFNG, in an IL2-dependent and a PD-1-independent manner.

## Storage

Storage:

Store at 2-8°C. Avoid exposure to light. Stable for one year after shipment.

Storage Buffer:

PBS with 0.09% sodium azide and 0.5% BSA, pH7.3

For technical support and original validation data for this product please contact:

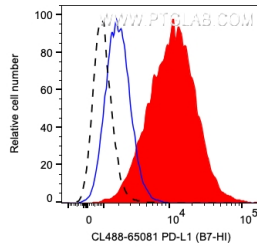
T: 4006900926

E: [Proteintech-CN@ptglab.com](mailto:Proteintech-CN@ptglab.com)

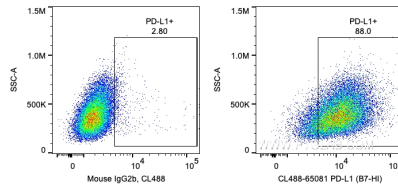
W: [ptgcn.com](http://ptgcn.com)

This product is exclusively available under Proteintech Group brand and is not available to purchase from any other manufacturer.

## Selected Validation Data



1X10<sup>6</sup> day 3 PHA treated human PBMCs were surface stained with 5 ul CoraLite® Plus 488 Anti-Human PD-L1 (B7-H1) (CL488-65081, Clone: 29E.2A3) (red) or Mouse IgG2b Isotype Control (blue). Unactivated PBMCs were surface stained with CL488-65081 (black). Cells were not fixed. Lymphocytes were gated.



1X10<sup>6</sup> day 3 PHA treated human PBMCs were surface stained with 5 ul CoraLite® Plus 488 Anti-Human PD-L1 (B7-H1) (CL488-65081, Clone: 29E.2A3) or Mouse IgG2b Isotype Control. Cells were not fixed. Lymphocytes were gated.