

For Research Use Only

CoraLite® Plus 488-conjugated Cytokeratin 20 Monoclonal antibody

Catalog Number: CL488-60183

1 Publications



Basic Information

Catalog Number: CL488-60183	GenBank Accession Number: BC031559	Purification Method: Protein A purification
Concentration: 1000 ug/ml	GeneID (NCBI): 54474	CloneNo.: 4D10A4
Source: Mouse	UNIPROT ID: P35900	Recommended Dilutions: IF-P 1:50-1:500 IF/ICC 1:50-1:500
Isotype: IgG2b	Full Name: keratin 20	Excitation/Emission maxima wavelengths: 493 nm / 522 nm
Immunogen Catalog Number: AG11336	Calculated MW: 424 aa, 48 kDa	

Applications

Tested Applications: IF/ICC, IF-P	Positive Controls: IF-P : human colon tissue, IF/ICC : HT-29 cells,
Cited Applications: IF	
Species Specificity: human	
Cited Species: mouse	

Background Information

Keratins are a large family of proteins that form the intermediate filament cytoskeleton of epithelial cells. Keratin expression is highly regulated, tissue specific, and varies according to cell-state. Type I keratins consist of acidic, low molecular weight proteins with MW ranging from 40 kDa (KRT19) to 64 kDa (KRT9). Type 2 keratins consist of basic or neutral, high molecular weight proteins with MW from 52 kDa (KRT8) to 67 kDa (KRT18). Keratin 20 is a type I cytokeratin. It is a major cellular protein of mature enterocytes and goblet cells and is specifically found in the gastric and intestinal mucosa.

Notable Publications

Author	Pubmed ID	Journal	Application
Kuo-Sheng Lee	39548325	Nat Neurosci	IF

Storage

Storage:
Store at -20°C. Avoid exposure to light. Stable for one year after shipment.
Storage Buffer:
PBS with 50% Glycerol, 0.05% Proclin300, 0.5% BSA, pH 7.3.
Aliquoting is unnecessary for -20°C storage

For technical support and original validation data for this product please contact:

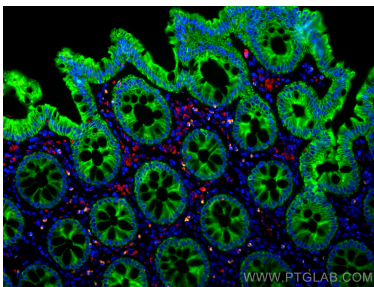
T: 4006900926

E: Proteintech-CN@ptglab.com

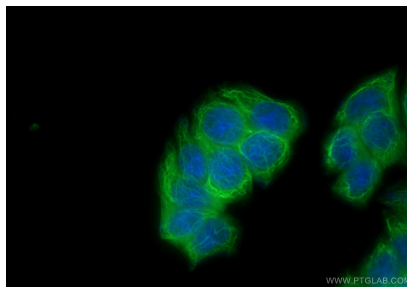
W: ptgcn.com

This product is exclusively available under Proteintech Group brand and is not available to purchase from any other manufacturer.

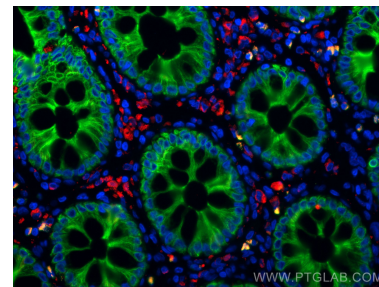
Selected Validation Data



Immunofluorescent analysis of (4% PFA) fixed human colon tissue using CoraLite® Plus 488 Cytokeratin 20 antibody (CL488-60183, Clone: 4D10A4) at dilution of 1:200, CoraLite®594 CD68 antibody (CL594-25747, red).



Immunofluorescent analysis of (-20°C Ethanol) fixed HT-29 cells using CoraLite® Plus 488 Cytokeratin 20 antibody (CL488-60183, Clone: 4D10A4) at dilution of 1:200.



Immunofluorescent analysis of (4% PFA) fixed human colon tissue using CoraLite® Plus 488 Cytokeratin 20 antibody (CL488-60183, Clone: 4D10A4) at dilution of 1:200, CoraLite®594 CD68 antibody (CL594-25747, red).