

For Research Use Only

# CoraLite® Plus 488-conjugated Annexin A2 Monoclonal antibody

Catalog Number: CL488-60051

Featured Product

1 Publications



## Basic Information

Catalog Number:

CL488-60051

Size:

1000 ug/ml

Source:

Mouse

Isotype:

IgG2b

Immunogen Catalog Number:

AG1777

GenBank Accession Number:

BC016774

GeneID (NCBI):

302

ENSEMBL Gene ID:

ENSG00000182718

UNIPROT ID:

P07355

Full Name:

annexin A2

Calculated MW:

339 aa, 39 kDa

Observed MW:

35-38 kDa

Purification Method:

Protein A purification

CloneNo.:

3H1B11

Recommended Dilutions:

IF/ICC 1:50-1:500

Excitation/Emission maxima wavelengths:

493 nm / 522 nm

## Applications

Tested Applications:

IF/ICC

Cited Applications:

IF

Species Specificity:

human, mouse

Cited Species:

human

Positive Controls:

IF/ICC : MCF-7 cells,

## Background Information

Annexin A2 (ANXA2), also named Annexin-2 or Lipocortin II, is a Ca<sup>2+</sup> binding protein that is up-regulated in virally transformed cell lines and human tumors. This calcium-regulated membrane-binding protein, whose affinity for calcium is greatly enhanced by anionic phospholipids, may cross-link plasma membrane phospholipids with actin and the cytoskeleton and be involved with exocytosis. Heat-stress response may also involve Annexin-2.

## Notable Publications

Author	Pubmed ID	Journal	Application
Wugan Zhao	35293080	Cancer Sci	IF

## Storage

Storage:

Store at -20°C. Avoid exposure to light. Stable for one year after shipment.

Storage Buffer:

PBS with 50% Glycerol, 0.05% Proclin300, 0.5% BSA, pH 7.3.

Aliquoting is unnecessary for -20°C storage

For technical support and original validation data for this product please contact:

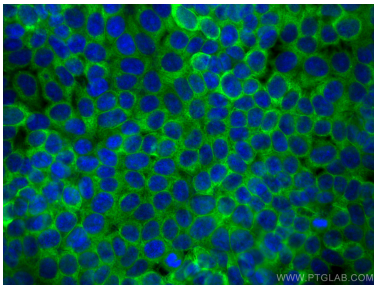
T: 4006900926

E: [Proteintech-CN@ptglab.com](mailto:Proteintech-CN@ptglab.com)

W: [ptgcn.com](http://ptgcn.com)

This product is exclusively available under Proteintech Group brand and is not available to purchase from any other manufacturer.

## Selected Validation Data



Immunofluorescent analysis of (-20°C Methanol)  
fixed MCF-7 cells using CoraLite® Plus 488  
Annexin A2 antibody (CL488-60051, Clone: 3H1B11  
) at dilution of 1:100.