

For Research Use Only

CoraLite® Plus 488-conjugated VGLUT1 Polyclonal antibody

Catalog Number: CL488-55491



Basic Information

Catalog Number:

CL488-55491

Concentration:

1000 µg/ml

Source:

Rabbit

Isotype:

IgG

GenBank Accession Number:

NM_020309

GeneID (NCBI):

57030

UNIPROT ID:

Q9P2U7

Full Name:

solute carrier family 17 (sodium-dependent inorganic phosphate cotransporter), member 7

Calculated MW:

62 kDa

Purification Method:

Antigen affinity purification

Recommended Dilutions:

IF-P: 1:50-1:500

FC (Intra): 0.80 µg per 10⁶ cells in a 100 µl suspension

Excitation/Emission maxima wavelengths:

493 nm / 522 nm

Applications

Tested Applications:

IF-P, FC (Intra)

Species Specificity:

human, mouse, rat

Positive Controls:

IF-P: mouse brain tissue,

FC (Intra): SH-SY5Y cells,

Background Information

Storage

Storage:

Store at -20°C. Avoid exposure to light. Stable for one year after shipment.

Storage Buffer:

PBS with 50% glycerol, 0.05% Proclin300, 0.5% BSA, pH7.3

Aliquoting is unnecessary for -20°C storage

For technical support and original validation data for this product please contact:

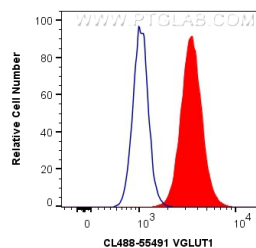
T: 4006900926

E: Proteintech-CN@ptglab.com

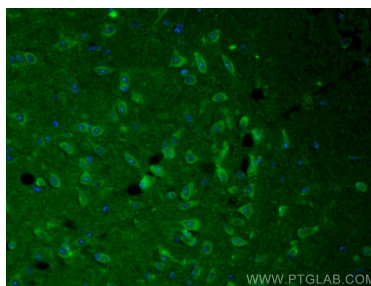
W: ptgcn.com

This product is exclusively available under Proteintech Group brand and is not available to purchase from any other manufacturer.

Selected Validation Data



1X10⁶ SH-SY5Y cells were intracellularly stained with 0.8 ug CoraLite® Plus 488 Anti-Human VGLUT1 (CL488-55491) (red), or 0.8 ug Isotype Control. Cells were fixed with 4% PFA and permeabilized with Flow Cytometry Perm Buffer (PF00011-C).



Immunofluorescent analysis of (4% PFA) fixed mouse brain tissue using CoraLite® Plus 488 VGLUT1 antibody (CL488-55491) at dilution of 1:200.