

For Research Use Only

CoraLite® Plus 488-conjugated Giantin Polyclonal antibody

Catalog Number: CL488-22270



Basic Information

Catalog Number:

CL488-22270

Concentration:

1000 ug/ml

Source:

Rabbit

Isotype:

IgG

GenBank Accession Number:

NM_004487

GeneID (NCBI):

2804

UNIPROT ID:

Q14789

Full Name:

golgin B1, golgi integral membrane protein

Calculated MW:

376 kDa

Purification Method:

Antigen affinity purification

Recommended Dilutions:

IF/ICC 1:50-1:500

Excitation/Emission maxima wavelengths:

493 nm / 522 nm

Applications

Tested Applications:

IF/ICC

Species Specificity:

human

Positive Controls:

IF/ICC : A549 cells, HepG2 cells

Background Information

Giantin is conserved Golgi membrane protein containing a large cytoplasmic domain. It may function to form the intercisternal cross-bridges of the Golgi complex. Anti-Giantin has been widely used to label the Golgi apparatus.

Storage

Storage:

Store at -20°C. Avoid exposure to light. Stable for one year after shipment.

Storage Buffer:

PBS with 50% glycerol, 0.05% Proclin300, 0.5% BSA, pH7.3

Aliquoting is unnecessary for -20°C storage

For technical support and original validation data for this product please contact:

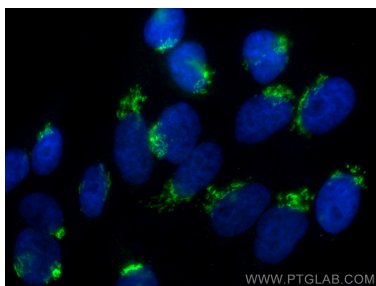
T: 4006900926

E: Proteintech-CN@ptglab.com

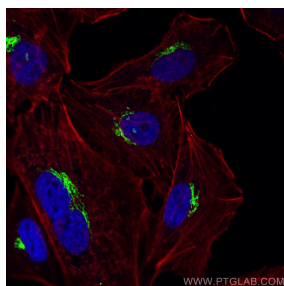
W: ptgcn.com

This product is exclusively available under Proteintech Group brand and is not available to purchase from any other manufacturer.

Selected Validation Data



Immunofluorescent analysis of (4% PFA) fixed HepG2 cells using CoraLite® Plus 488 Giantin antibody (CL488-22270) at dilution of 1:200.



Immunofluorescent analysis of (4% PFA) fixed A549 cells using CoraLite® Plus 488 Giantin antibody (CL488-22270) at dilution of 1:200, CoraLite® 594-Phalloidin (red).