

For Research Use Only

CoraLite® Plus 488-conjugated PKC Epsilon Polyclonal antibody

Catalog Number: CL488-20877

Featured Product



Basic Information

Catalog Number:

CL488-20877

Concentration:

500 µg/ml

Source:

Rabbit

Isotype:

IgG

Immunogen Catalog Number:

AG14976

GenBank Accession Number:

BC109033

GeneID (NCBI):

5581

UNIPROT ID:

Q02156

Full Name:

protein kinase C, epsilon

Calculated MW:

737 aa, 84 kDa

Observed MW:

84 kDa

Purification Method:

Antigen affinity purification

Recommended Dilutions:

IF/ICC: 1:50-1:500

FC (Intra): 0.40 µg per 10⁶ cells in a 100 µl suspension

Excitation/Emission maxima wavelengths:

493 nm / 522 nm

Applications

Tested Applications:

IF/ICC, FC (Intra)

Species Specificity:

human, mouse, rat

Positive Controls:

IF/ICC : HeLa cells,

FC (Intra) : Jurkat cells,

Background Information

PKC Epsilon (Protein kinase C epsilon type) is also named as PKC- ϵ , PRKCE and PKCE. It belongs to the protein kinase superfamily, AGC Ser/Thr protein kinase family and PKC subfamily. PKC- ϵ , one of the novel isoforms, as a critical player in membrane mobilization during phagocytosis (PMID: 9069266). KC- ϵ is tethered to the Golgi through binding of its pseudosubstrate domain to phosphatidylinositol-4-phosphate (PI4P) (PMID: 28539432). PKC- ϵ traffics on microtubule-associated vesicles from the Golgi to the forming phagosome. As the majority of macrophage PKC- ϵ is cytosolic, and PKCs translocate from the cytosol to their sites of activity, it predicted that cytosolic PKC- ϵ concentrated at phagosomes to facilitate membrane addition (PMID: 34622926). Two PKC isozymes of the novel group, PKC- ϵ and PKC- δ , have different and sometimes opposite effects. PKC- ϵ stimulates cell growth and differentiation while PKC- δ is apoptotic (PMID: 21810427).

Storage

Storage:

Store at -20°C. Avoid exposure to light. Stable for one year after shipment.

Storage Buffer:

PBS with 50% glycerol, 0.05% Proclin300, 0.5% BSA, pH7.3

Aliquoting is unnecessary for -20°C storage

For technical support and original validation data for this product please contact:

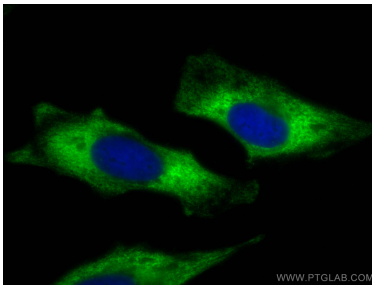
T: 4006900926

E: Proteintech-CN@ptglab.com

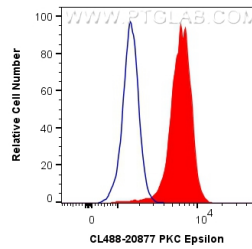
W: ptgcn.com

This product is exclusively available under Proteintech Group brand and is not available to purchase from any other manufacturer.

Selected Validation Data



Immunofluorescent analysis of (-20°C Ethanol) fixed HeLa cells using CoraLite® Plus 488 PKC Epsilon antibody (CL488-20877) at dilution of 1:200.



1X10⁶ Jurkat cells were intracellularly stained with 0.4 ug CoraLite® Plus 488 Anti-Human PKC Epsilon (CL488-20877) (red), or 0.4 ug CoraLite® Plus 488-conjugated Rabbit IgG control Rabbit PolyAb (CL488-30000, Clone:) (blue). Cells were fixed with 4% PFA and permeabilized with Flow Cytometry Perm Buffer (PF00011-C).