

For Research Use Only

CoraLite® Plus 488-conjugated GSDMD Polyclonal antibody



Catalog Number:CL488-20770

Featured Product

1 Publications

Basic Information

Catalog Number:

CL488-20770

Concentration:

1000 µg/ml

Source:

Rabbit

Isotype:

IgG

Immunogen Catalog Number:

AG14757

GenBank Accession Number:

BC008904

GeneID (NCBI):

79792

UNIPROT ID:

P57764

Full Name:

gasdermin D

Calculated MW:

484 aa, 53 kDa

Observed MW:

50-53 kDa

Purification Method:

Antigen affinity purification

Recommended Dilutions:

IF/ICC: 1:50-1:500

FC (Intra): 0.80 ug per 10⁶ cells in a 100 µl suspension

FC: 0.80 ug per 10⁶ cells in a 100 µl suspension

Excitation/Emission maxima

wavelengths:

493 nm / 522 nm

Applications

Tested Applications:

IF/ICC, FC (Intra)

Cited Applications:

FC (Intra)

Species Specificity:

human, mouse, rat

Cited Species:

human

Positive Controls:

IF/ICC : HeLa cells,

FC (Intra) : Jurkat cells,

FC : Jurkat cells,

Background Information

GSDMD is a member of the gasdermin family. Members of this family appear to play a role in regulation of epithelial proliferation. GSDMD has been suggested to act as a tumor suppressor. Recently, GSDMD is identified as a new component of inflammasomes, and it is an executor of pyroptosis and required for interleukin-1 β secretion. Cleavage of GSDMD by inflammatory caspases determines pyroptotic cell death.

Notable Publications

Author	Pubmed ID	Journal	Application
Xiaozhuo Ba	39947306	Acta Biomater	FC (Intra)

Storage

Storage:

Store at -20°C. Avoid exposure to light. Stable for one year after shipment.

Storage Buffer:

PBS with 50% glycerol, 0.05% Proclin300, 0.5% BSA, pH7.3

Aliquoting is unnecessary for -20°C storage

For technical support and original validation data for this product please contact:

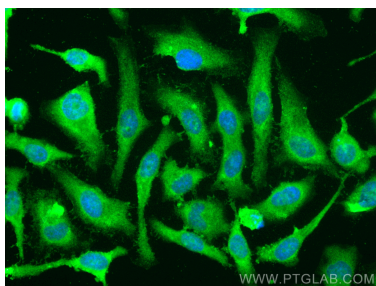
T: 4006900926

E: Proteintech-CN@ptglab.com

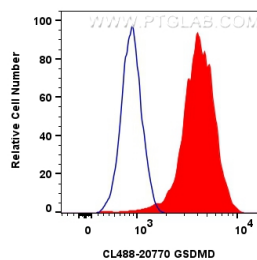
W: ptgcn.com

This product is exclusively available under Proteintech Group brand and is not available to purchase from any other manufacturer.

Selected Validation Data



Immunofluorescent analysis of (-20°C Methanol) fixed HeLa cells using Coralite® Plus 488 GSDMD antibody (CL488-20770) at dilution of 1:200.



1x10⁶ Jurkat cells were intracellularly stained with 0.8 ug Coralite® Plus 488 GSDMD Polyclonal Antibody (CL488-20770)(red), or 0.8 ug Coralite® Plus 488-conjugated Rabbit IgG control Rabbit PolyAb (CL488-30000) (blue). Cells were fixed with 4% PFA and permeabilized with Flow Cytometry Perm Buffer (PF00011-C).