

For Research Use Only

# CoraLite® Plus 488-conjugated EIF4B Polyclonal antibody

Catalog Number: CL488-17917

Featured Product



## Basic Information

Catalog Number:

CL488-17917

Concentration:

1000 ug/ml

Source:

Rabbit

Isotype:

IgG

Immunogen Catalog Number:

AG12325

GenBank Accession Number:

BC073154

GeneID (NCBI):

1975

UNIPROT ID:

P23588

Full Name:

eukaryotic translation initiation factor 4B

Calculated MW:

611 aa, 69 kDa

Observed MW:

80 kDa

Purification Method:

Antigen affinity purification

Recommended Dilutions:

IF/ICC: 1:50-1:500

FC (Intra): 0.40 ug per 10<sup>6</sup> cells in a 100 µl suspension

Excitation/Emission maxima wavelengths:

493 nm / 522 nm

## Applications

Tested Applications:

IF/ICC, FC (Intra)

Species Specificity:

human, mouse, rat

Positive Controls:

IF/ICC : MCF-7 cells,

FC (Intra) : HeLa cells,

## Background Information

EIF4B is one of the mammalian eukaryotic initiation factors (eIF) that are required for the ATP-dependent binding of mRNA to the 40 S ribosomal subunit, and the other eIF proteins are EIF4A, EIF4F. eIF4B is involved in translation of numerous proliferative or anti-apoptotic mRNAs with highly structured 5'UTR and subsequently affect cell growth and survival. It was reported that false expression and phosphorylation levels of eIF4B are involved in several tumors including breast cancer, cell lymphoblastic leukemia and diffuse large B-cell lymphoma (PMID: 26848623).

## Storage

Storage:

Store at -20°C. Avoid exposure to light. Stable for one year after shipment.

Storage Buffer:

PBS with 50% glycerol, 0.05% Proclin300, 0.5% BSA, pH7.3

Aliquoting is unnecessary for -20°C storage

For technical support and original validation data for this product please contact:

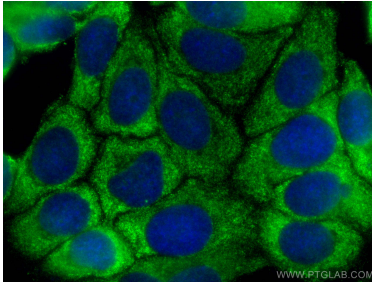
T: 4006900926

E: [Proteintech-CN@ptglab.com](mailto:Proteintech-CN@ptglab.com)

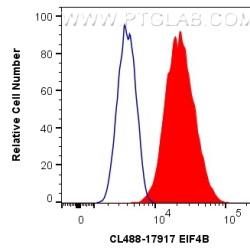
W: [ptgcn.com](http://ptgcn.com)

This product is exclusively available under Proteintech Group brand and is not available to purchase from any other manufacturer.

## Selected Validation Data



Immunofluorescent analysis of (-20°C Methanol) fixed MCF-7 cells using CoraLite® Plus 488 EIF4B antibody (CL488-17917) at dilution of 1:200.



1X10<sup>6</sup> HeLa cells were intracellularly stained with 0.4 ug CoraLite® Plus 488 Anti-Human EIF4B (CL488-17917) (red), or 0.4 ug Isotype Control. Cells were fixed with 4% PFA and permeabilized with Flow Cytometry Perm Buffer (PF00011-C).