

For Research Use Only



# CoraLite® Plus 488-conjugated Cytokeratin 7-specific Polyclonal antibody

Catalog Number: **CL488-17513**

Featured Product

## Basic Information

Catalog Number:

CL488-17513

Concentration:

1000 µg/ml

Source:

Rabbit

Isotype:

IgG

GenBank Accession Number:

NM\_005556

GeneID (NCBI):

3855

UNIPROT ID:

P08729

Full Name:

keratin 7

Calculated MW:

51 kDa

Purification Method:

Antigen affinity purification

Recommended Dilutions:

IF/ICC: 1:50-1:500

FC (Intra): 0.40 µg per 10<sup>6</sup> cells in a 100 µl suspension

FC: 0.40 µg per 10<sup>6</sup> cells in a 100 µl suspension

Excitation/Emission maxima wavelengths:

493 nm / 522 nm

## Applications

Tested Applications:

IF/ICC, FC (Intra)

Species Specificity:

human

Positive Controls:

IF/ICC : HepG2 cells,

FC (Intra) : HepG2 cells,

FC : HepG2 cells,

## Background Information

Keratins are a large family of proteins that form the intermediate filament cytoskeleton of epithelial cells, which are classified into two major sequence types. Type I keratins are a group of acidic intermediate filament proteins, including K9-K23, and the hair keratins Ha1-Ha8. Type II keratins are the basic or neutral counterparts to the acidic type I keratins, including K1-K8, and the hair keratins, Hb1-Hb6. KRT7 is a type II keratin. It is specifically expressed in the simple epithelia lining the cavities of the internal organs and in the gland ducts and blood vessels. This antibody is specifically against KRT7.

## Storage

Storage:

Store at -20°C. Avoid exposure to light. Stable for one year after shipment.

Storage Buffer:

PBS with 50% glycerol, 0.05% Proclin300, 0.5% BSA, pH7.3

Aliquoting is unnecessary for -20°C storage

For technical support and original validation data for this product please contact:

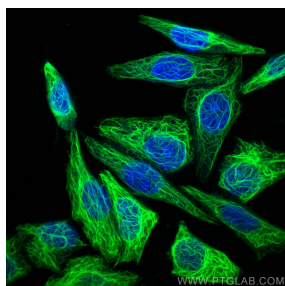
T: 4006900926

E: [Proteintech-CN@ptglab.com](mailto:Proteintech-CN@ptglab.com)

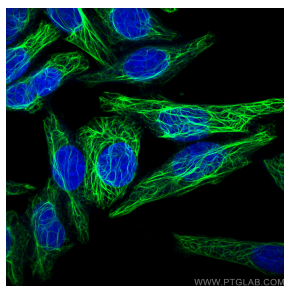
W: [ptgcn.com](http://ptgcn.com)

This product is exclusively available under Proteintech Group brand and is not available to purchase from any other manufacturer.

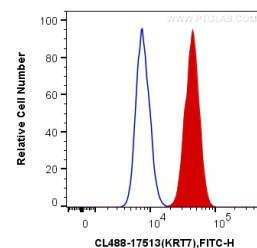
## Selected Validation Data



Immunofluorescent analysis of (-20°C Ethanol) fixed HepG2 cells using CoraLite® Plus 488 Cytokeratin 7-specific antibody (CL488-17513) at dilution of 1:200.



Immunofluorescent analysis of (-20°C Ethanol) fixed HepG2 cells using CoraLite® Plus 488 Cytokeratin 7-specific antibody (CL488-17513) at dilution of 1:200.



1X10<sup>6</sup> HepG2 cells were intracellularly stained with 0.4 ug CoraLite® Plus 488 Anti-Human Cytokeratin 7-specific (CL488-17513) (red), or 0.4 ug Control Antibody. Cells were fixed with 4% PFA and permeabilized with Flow Cytometry Perm Buffer (PF00011-C).