

For Research Use Only

CoraLite® Plus 488-conjugated ACAT1 Polyclonal antibody

Catalog Number: CL488-16215

Featured Product



Basic Information

Catalog Number:

CL488-16215

Concentration:

1000 µg/ml

Source:

Rabbit

Isotype:

IgG

Immunogen Catalog Number:

AG9215

GenBank Accession Number:

BC010942

GeneID (NCBI):

38

UNIPROT ID:

P24752

Full Name:

acetyl-Coenzyme A acetyltransferase

1

Calculated MW:

45 kDa

Observed MW:

38-45 kDa

Purification Method:

Antigen affinity purification

Recommended Dilutions:

IF/ICC: 1:50-1:500

FC (Intra): 0.80 µg per 10⁶ cells in a 100 µl suspension

Excitation/Emission maxima

wavelengths:

493 nm / 522 nm

Applications

Tested Applications:

IF/ICC, FC (Intra)

Species Specificity:

human, mouse, rat

Positive Controls:

IF/ICC : HeLa cells,

FC (Intra) : HeLa cells,

Background Information

ACAT1 (acetyl-CoA acetyltransferase), is a mitochondrial enzyme catalyzing the reversible formation or breakdown of acetoacetyl-CoA and plays important roles in ketogenesis and ketolysis. Deficiency of ACAT1 causes an inherited metabolic disorder. Recently ACAT1 has been reported to get involved in cancer progression.

Storage

Storage:

Store at -20°C. Avoid exposure to light. Stable for one year after shipment.

Storage Buffer:

PBS with 50% glycerol, 0.05% Proclin300, 0.5% BSA, pH7.3

Aliquoting is unnecessary for -20°C storage

For technical support and original validation data for this product please contact:

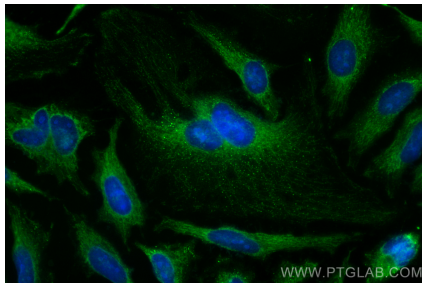
T: 4006900926

E: Proteintech-CN@ptglab.com

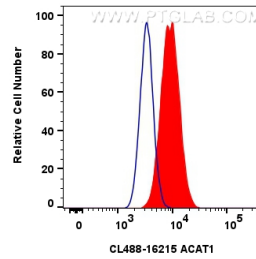
W: ptgcn.com

This product is exclusively available under Proteintech Group brand and is not available to purchase from any other manufacturer.

Selected Validation Data



Immunofluorescent analysis of (-20°C Ethanol) fixed HeLa cells using CoraLite® Plus 488 ACAT1 antibody (CL488-16215) at dilution of 1:200.



1x10⁶ HeLa cells were intracellularly stained with 0.8 ug CoraLite® Plus 488 Anti-Human ACAT1 (CL488-16215) (red), or 0.8 ug CoraLite® Plus 488-conjugated Rabbit IgG control Rabbit PolyAb (CL488-30000, Clone:) (blue). Cells were fixed with 4% PFA and permeabilized with Flow Cytometry Perm Buffer (PF00011-C).