

For Research Use Only

CoraLite® Plus 488-conjugated Islet 1 Polyclonal antibody

Catalog Number: CL488-15661



Basic Information

Catalog Number:

CL488-15661

Concentration:

1000 µg/ml

Source:

Rabbit

Isotype:

IgG

Immunogen Catalog Number:

AG8088

GenBank Accession Number:

BC031213

GeneID (NCBI):

3670

UNIPROT ID:

P61371

Full Name:

ISL LIM homeobox 1

Calculated MW:

39 kDa

Observed MW:

39-45 kDa

Purification Method:

Antigen affinity purification

Recommended Dilutions:

IF/ICC: 1:50-1:500

FC (Intra): 0.80 µg per 10⁶ cells in a 100 µl suspension

Excitation/Emission maxima wavelengths:

493 nm / 522 nm

Applications

Tested Applications:

IF/ICC, FC (Intra)

Species Specificity:

human

Positive Controls:

IF/ICC : SH-SY5Y cells,

FC (Intra) : SH-SY5Y cells,

Background Information

ISL1 belongs to the LIM homeodomain transcription factor family that binds to the enhancer region of the INS gene. It plays a pivotal role in cardiogenesis, and lacking ISL1 expression results in growth arrest or displays profound defects in heart development, including atria, ventricle, and the inflow and outflow tracts.

Storage

Storage:

Store at -20°C. Avoid exposure to light. Stable for one year after shipment.

Storage Buffer:

PBS with 50% glycerol, 0.05% Proclin300, 0.5% BSA, pH7.3

Aliquoting is unnecessary for -20°C storage

For technical support and original validation data for this product please contact:

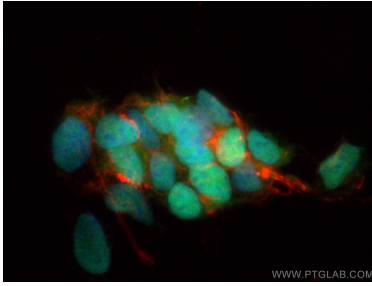
T: 4006900926

E: Proteintech-CN@ptglab.com

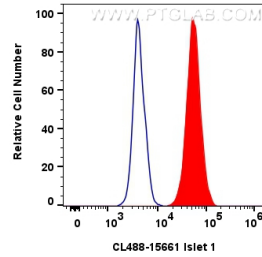
W: ptgcn.com

This product is exclusively available under Proteintech Group brand and is not available to purchase from any other manufacturer.

Selected Validation Data



Immunofluorescent analysis of (4% PFA) fixed SH-SY5Y cells using Coralite® Plus 488 Islet 1 antibody (CL488-15661) at dilution of 1:200, CL594-Phalloidin (red).



1x10⁶ SH-SY5Y cells were intracellularly stained with 0.8 ug Coralite® Plus 488 Anti-Human Islet 1 (CL488-15661) (red), or 0.8 ug Coralite® Plus 488-conjugated Rabbit IgG control Rabbit PolyAb (CL488-30000, Clone:) (blue). Cells were fixed and permeabilized with True-Nuclear Transcription Factor Buffer Set.