

For Research Use Only

# CoraLite® Plus 488-conjugated LC3 Polyclonal antibody

Catalog Number: CL488-14600

Featured Product



## Basic Information

Catalog Number:

CL488-14600

Concentration:

1000 µg/ml

Source:

Rabbit

Isotype:

IgG

Immunogen Catalog Number:

AG6144

GenBank Accession Number:

BC067797

GeneID (NCBI):

81631

ENSEMBL Gene ID:

ENSG00000140941

UNIPROT ID:

Q9GZQ8

Full Name:

microtubule-associated protein 1  
light chain 3 beta

Calculated MW:

15 kDa

Purification Method:

Antigen affinity purification

Recommended Dilutions:

IF/ICC: 1:50-1:500

FC (Intra): 0.80 µg per 10<sup>6</sup> cells in a  
100 µl suspension

Excitation/Emission maxima  
wavelengths:

493 nm / 522 nm

## Applications

Tested Applications:

IF/ICC, FC (Intra)

Species Specificity:

human, mouse, rat

Positive Controls:

IF/ICC : Chloroquine treated HepG2 cells,

FC (Intra) : HeLa cells, HEK-293 cells

## Background Information

Map1LC3, also known as LC3, is the human homolog of yeast Atg8 and is involved in the formation of autophagosomal vacuoles, called autophagosomes. Three human Map1LC3 isoforms, MAP1LC3A, MAP1LC3B, and MAP1LC3C, undergo post-translational modifications during autophagy. And they differ in their post-translation modifications during autophagy. Map1LC3 also exists in two modified forms, an 18 kDa cytoplasmic form that was originally identified as a subunit of the microtubule-associated protein 1, and a 14-16 kDa form that is associated with the autophagosome membrane. This antibody can cross react with MAP1LC3A, MAP1LC3B, and MAP1LC3C.

## Storage

Storage:

Store at -20°C. Avoid exposure to light. Stable for one year after shipment.

Storage Buffer:

PBS with 50% glycerol, 0.05% Proclin300, 0.5% BSA, pH7.3

Aliquoting is unnecessary for -20°C storage

For technical support and original validation data for this product please contact:

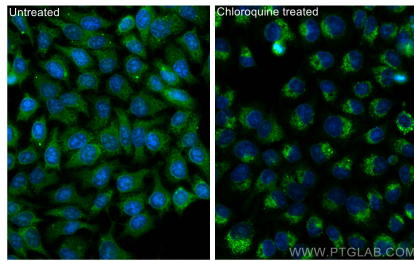
T: 4006900926

E: [Proteintech-CN@ptglab.com](mailto:Proteintech-CN@ptglab.com)

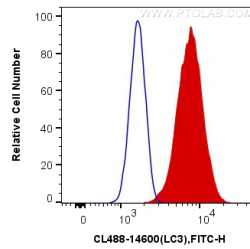
W: [ptgcn.com](http://ptgcn.com)

This product is exclusively available under Proteintech Group brand and is not available to purchase from any other manufacturer.

## Selected Validation Data



Immunofluorescent analysis of (-20°C Ethanol) fixed Chloroquine treated HepG2 cells using CoraLite® Plus 488 LC3 antibody (CL488-14600) at dilution of 1:200.



1X10<sup>6</sup> HeLa cells were intracellularly stained with 0.8 ug CoraLite® Plus 488 Anti-Human LC3 (CL488-14600) (red), or 0.8 ug Control Antibody. Cells were fixed with 4% PFA and permeabilized with Flow Cytometry Perm Buffer (PF00011-C).