

For Research Use Only

# CoraLite® Plus 488-conjugated Calbindin-D28k Polyclonal antibody

Catalog Number: CL488-14479

Featured Product



## Basic Information

Catalog Number:

CL488-14479

Concentration:

1000 ug/ml

Source:

Rabbit

Isotype:

IgG

Immunogen Catalog Number:

AG5861

GenBank Accession Number:

BC006478

GeneID (NCBI):

793

UNIPROT ID:

P05937

Full Name:

calbindin 1, 28kDa

Calculated MW:

30 kDa

Purification Method:

Antigen affinity purification

Recommended Dilutions:

IF-P: 1:50-1:500

Excitation/Emission maxima wavelengths:

493 nm / 522 nm

## Applications

Tested Applications:

IF-P

Species Specificity:

human, mouse, rat

Positive Controls:

IF-P: human kidney tissue, mouse cerebellum tissue

## Background Information

Calbindin-D28k is a member of the calcium-binding protein superfamily that includes calmodulin and troponin C. It is a cytosolic calcium binding protein highly expressed in the distal tubule, intestines, central nervous system, primary murine osteoblast cells and in several other organs. It plays an important role in the intracellular calcium homeostasis, its strong buffering capacity prevents cytotoxic effect of high concentration of free calcium in kidney, brain, pancreas, and intestine.

## Storage

Storage:

Store at -20°C. Avoid exposure to light. Stable for one year after shipment.

Storage Buffer:

PBS with 50% glycerol, 0.05% Proclin300, 0.5% BSA, pH7.3

Aliquoting is unnecessary for -20°C storage

For technical support and original validation data for this product please contact:

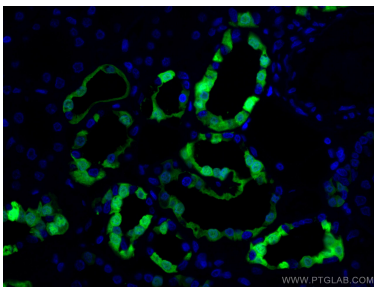
T: 4006900926

E: [Proteintech-CN@ptglab.com](mailto:Proteintech-CN@ptglab.com)

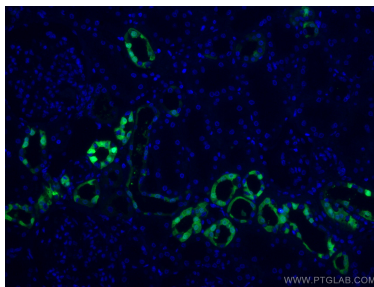
W: [ptgcn.com](http://ptgcn.com)

This product is exclusively available under Proteintech Group brand and is not available to purchase from any other manufacturer.

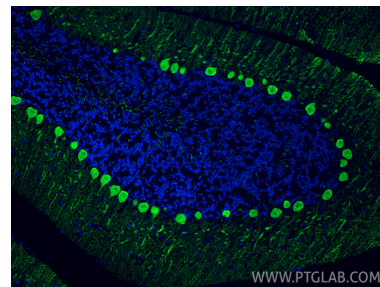
## Selected Validation Data



Immunofluorescent analysis of (4% PFA) fixed human kidney tissue using CoraLite® Plus 488 Calbindin-D28k antibody (CL488-14479) at dilution of 1:200.



Immunofluorescent analysis of (4% PFA) fixed human kidney tissue using CoraLite® Plus 488 Calbindin-D28k antibody (CL488-14479) at dilution of 1:200.



Immunofluorescent analysis of (4% PFA) fixed paraffin-embedded mouse cerebellum tissue using CoraLite® Plus 488 Calbindin-D28k antibody (CL488-14479) at dilution of 1:200. Heat mediated antigen retrieval with Tris-EDTA buffer (pH 9.0).