

For Research Use Only

# CoraLite® Plus 488-conjugated MAVS; VISA Polyclonal antibody

Catalog Number:CL488-14341

Featured Product

1 Publications



## Basic Information

Catalog Number:

CL488-14341

Size:

1000 µg/ml

Source:

Rabbit

Isotype:

IgG

Immunogen Catalog Number:

AG5655

GenBank Accession Number:

BC044952

GeneID (NCBI):

57506

UNIPROT ID:

Q7Z434

Full Name:

mitochondrial antiviral signaling protein

Calculated MW:

57 kDa

Observed MW:

50-55 kDa, 70-75 kDa

Purification Method:

Antigen affinity purification

Recommended Dilutions:

IF/ICC 1:50-1:500

Excitation/Emission maxima wavelengths:

493 nm / 522 nm

## Applications

Tested Applications:

IF/ICC

Species Specificity:

human

Cited Species:

human

Positive Controls:

IF/ICC : HeLa cells,

## Background Information

Mitochondrial antiviral-signaling protein (MAVS) is also known as virus-induced-signaling adapter (VISA) or IFN beta promoter stimulator protein 1 (IPS-1), it is widely involved and required for innate immune defense against viruses. MAVS, present in T cells, monocytes, epithelial cells and hepatocytes, contains CARD and transmembrane domains which are essential for antiviral functions. MAVS is able to interact with various cellular proteins including DDX58/RIG-I, IFIH1/MDA5, TRAF2, TRAF6, TMEM173/MITA, IFIT3 and etc. This antibody is conjugated with CL488, Ex/Em 488 nm/515 nm.

## Notable Publications

Author	Pubmed ID	Journal	Application
Ming Kuang	37595039	Sci Adv	

## Storage

Storage:

Store at -20°C. Avoid exposure to light. Stable for one year after shipment.

Storage Buffer:

PBS with 50% Glycerol, 0.05% Proclin300, 0.5% BSA, pH 7.3.

Aliquoting is unnecessary for -20°C storage

For technical support and original validation data for this product please contact:

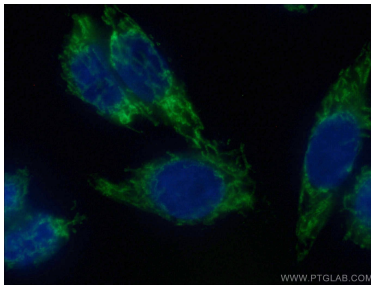
T: 4006900926

E: [Proteintech-CN@ptglab.com](mailto:Proteintech-CN@ptglab.com)

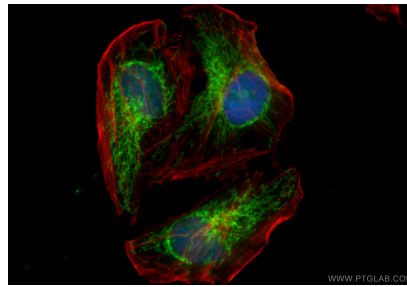
W: [ptgcn.com](http://ptgcn.com)

This product is exclusively available under Proteintech Group brand and is not available to purchase from any other manufacturer.

## Selected Validation Data



Immunofluorescent analysis of (4% PFA) fixed HeLa cells using CL488-14341 (MAVS; VISA antibody) at dilution of 1:50.



Immunofluorescent analysis of (4% PFA) fixed HeLa cells using CoraLite® Plus 488 MAVS; VISA antibody (CL488-14341) at dilution of 1:200, CL594-phalloidin (red).