

For Research Use Only

# CoraLite® Plus 488-conjugated GCLM Polyclonal antibody

Catalog Number: CL488-14241

Featured Product



## Basic Information

Catalog Number:

CL488-14241

Concentration:

1000 ug/ml

Source:

Rabbit

Isotype:

IgG

Immunogen Catalog Number:

AG5497

GenBank Accession Number:

BC041809

GeneID (NCBI):

2730

UNIPROT ID:

P48507

Full Name:

glutamate-cysteine ligase, modifier subunit

Calculated MW:

31 kDa

Observed MW:

31 kDa

Purification Method:

Antigen affinity purification

Recommended Dilutions:

IF/ICC: 1:50-1:500

FC (Intra): 0.40 ug per 10<sup>6</sup> cells in a 100 µl suspension

Excitation/Emission maxima wavelengths:

493 nm / 522 nm

## Applications

Tested Applications:

IF/ICC, FC (Intra)

Species Specificity:

human, mouse, rat

Positive Controls:

IF/ICC : HepG2 cells,

FC (Intra) : HepG2 cells,

## Background Information

GCLM (Glutamate--cysteine ligase regulatory subunit) is also named as GLCLR and belongs to the aldo/keto reductase family. It catalyzes the first step of GSH synthesis and is involved in gamma-glutamyl cycle. GCLM is implicated in some forms of hemolytic anemia.

## Storage

Storage:

Store at -20°C. Avoid exposure to light. Stable for one year after shipment.

Storage Buffer:

PBS with 50% glycerol, 0.05% Proclin300, 0.5% BSA, pH7.3

Aliquoting is unnecessary for -20°C storage

For technical support and original validation data for this product please contact:

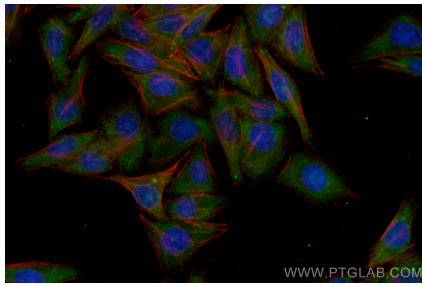
T: 4006900926

E: [Proteintech-CN@ptglab.com](mailto:Proteintech-CN@ptglab.com)

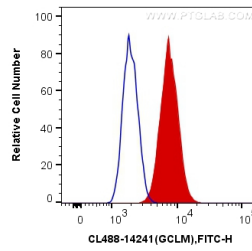
W: [ptgcn.com](http://ptgcn.com)

This product is exclusively available under Proteintech Group brand and is not available to purchase from any other manufacturer.

## Selected Validation Data



Immunofluorescent analysis of (-20°C Ethanol) fixed HepG2 cells using CoraLite® Plus 488 GCLM antibody (CL488-14241) at dilution of 1:200.



1X10<sup>6</sup> HepG2 cells were intracellularly stained with 0.4 ug CoraLite® Plus 488 Anti-Human GCLM (CL488-14241) (red), or 0.4 ug Control Antibody. Cells were fixed with 4% PFA and permeabilized with Flow Cytometry Perm Buffer (PF00011-C).