

For Research Use Only

CoraLite® Plus 488-conjugated BOULE Polyclonal antibody

Catalog Number: CL488-13720



Basic Information

Catalog Number: CL488-13720	GenBank Accession Number: BC033674	Purification Method: Antigen affinity purification
Concentration: 1000 µg/ml	GeneID (NCBI): 66037	Recommended Dilutions: IF-P: 1:200-1:800 IF-Fro: 1:50-1:500
Source: Rabbit	UNIPROT ID: Q8N9W6	Excitation/Emission maxima wavelengths: 493 nm / 522 nm
Isotype: IgG	Full Name: bol, boule-like (Drosophila)	
Immunogen Catalog Number: AG4662	Calculated MW: 283 aa, 31 kDa	

Applications

Tested Applications: IF-P, IF-Fro	Positive Controls: IF-P: mouse testis tissue, IF-Fro: mouse testis tissue,
Species Specificity: human, mouse, rat	

Background Information

BOULE, also called BOLL, belongs to the RRM DAZ family. BOULE has been identified as being involved in regulating the development and differentiation of germ cells and playing an essential role in infertility (PMID: 31683986). BOULE is specifically expressed in testis, but not in early embryos, primordial germ cells, and spermatogonial cells. It is first expressed in the cytoplasm of spermatocytes and then persists through meiosis. BOULE has 5 isoforms with the molecular mass of 19 and 31-38 kDa. This antibody detects two bands in testis, the lower band of ~40 kDa in size corresponds to the predicted endogenous BOULE protein, while the upper band may be an isoform or posttranslationally modified version of the BOULE protein (PMID: 27632217).

Storage

Storage:
Store at -20°C. Avoid exposure to light. Stable for one year after shipment.
Storage Buffer:
PBS with 50% glycerol, 0.05% Proclin300, 0.5% BSA, pH7.3
Aliquoting is unnecessary for -20°C storage

For technical support and original validation data for this product please contact:

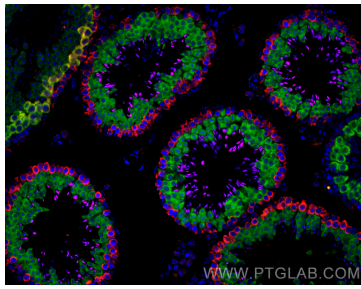
T: 4006900926

E: Proteintech-CN@ptglab.com

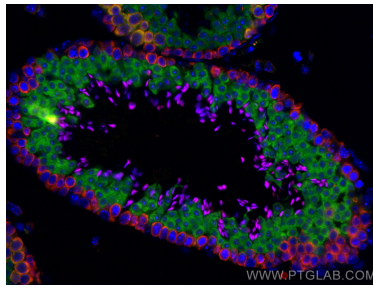
W: ptgcn.com

This product is exclusively available under Proteintech Group brand and is not available to purchase from any other manufacturer.

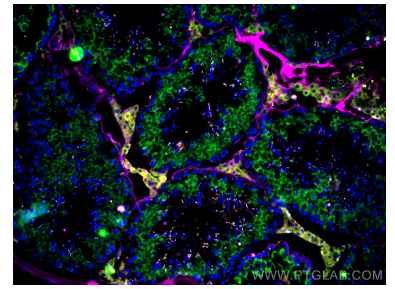
Selected Validation Data



Immunofluorescent analysis of (4% PFA) fixed mouse testis tissue using CoraLite® Plus 488 BOULE antibody (CL488-13720) at dilution of 1:400, CoraLite®594 DAZL antibody (CL594-12633, red), CoraLite® Plus 647 TNP1 antibody (CL647-17178, Magenta).



Immunofluorescent analysis of (4% PFA) fixed mouse testis tissue using CoraLite® Plus 488 BOULE antibody (CL488-13720) at dilution of 1:400, CoraLite®594 DAZL antibody (CL594-12633, red), CoraLite® Plus 647 TNP1 antibody (CL647-17178, Magenta).



Immunofluorescent analysis of (4% PFA) fixed frozen OCT-embedded mouse testis tissue using CoraLite® Plus 488 CL488-13720 (BOULE antibody) at dilution of 1:100, CoraLite®555 CL555-17178 (TNP1 antibody, orange) and 67130-1-Ig (STAR antibody, Magenta).