

For Research Use Only



CoraLite® Plus 488-conjugated Hemoglobin Epsilon Polyclonal antibody

Catalog Number: **CL488-12361**

Basic Information

Catalog Number: CL488-12361	GenBank Accession Number: BC015537	Purification Method: Antigen affinity purification
Concentration: 1000 µg/ml	GeneID (NCBI): 3046	Recommended Dilutions: FC (Intra): 0.80 ug per 10⁶ cells in a 100 µl suspension
Source: Rabbit	UNIPROT ID: P02100	Excitation/Emission maxima wavelengths: 493 nm / 522 nm
Isotype: IgG	Full Name: hemoglobin, epsilon 1	
Immunogen Catalog Number: AG3026	Calculated MW: 147 aa, 16 kDa	
	Observed MW: 12-16 kDa	

Applications

Tested Applications: FC (Intra)	Positive Controls: FC (Intra) : K-562 cells,
Species Specificity: human, mouse, rat	

Background Information

The hemoglobin molecule is a tetramer consisting of two alpha- and two beta-globin-like chains. HBE1 (hemoglobin epsilon chain) is a beta-type chain of hemoglobin predominantly expressed during the embryonic stage (21321359). The HBE1 has been regarded as the best marker for fetal nucleated red blood cells (NRBCs). This antibody can be used to label and isolate fetal cells from maternal blood and may be useful in prenatal diagnosis (15906407).

Storage

Storage:
Store at -20°C. Avoid exposure to light. Stable for one year after shipment.
Storage Buffer:
PBS with 50% glycerol, 0.05% Proclin300, 0.5% BSA, pH7.3
Aliquoting is unnecessary for -20°C storage

For technical support and original validation data for this product please contact:

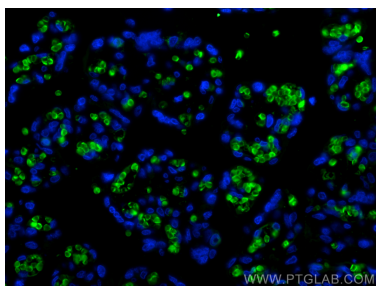
T: 4006900926

E: Proteintech-CN@ptglab.com

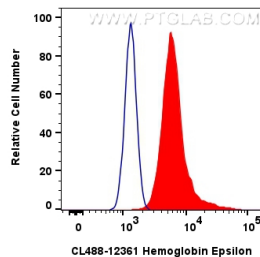
W: ptgcn.com

This product is exclusively available under Proteintech Group brand and is not available to purchase from any other manufacturer.

Selected Validation Data



Immunofluorescent analysis of (4% PFA) fixed paraffin-embedded human placenta tissue using CoraLite® Plus 488 Hemoglobin Epsilon antibody (CL488-12361) at dilution of 1:200. Heat mediated antigen retrieval with Tris-EDTA buffer (pH 9.0).



1x10⁶ K-562 cells were intracellularly stained with 0.8 ug CoraLite® Plus 488-conjugated Hemoglobin Epsilon Polyclonal antibody (CL488-12361)(red), or 0.8 ug CoraLite® Plus 488-conjugated Rabbit IgG control Rabbit PolyAb (CL488-30000) (blue). Cells were fixed with 4% PFA and permeabilized with Flow Cytometry Perm Buffer (PF00011-C).