

For Research Use Only

CoraLite® Plus 488-conjugated Clusterin Polyclonal antibody

Catalog Number: CL488-12289



Basic Information

Catalog Number:

CL488-12289

Size:

1000 ug/ml

Source:

Rabbit

Isotype:

IgG

Immunogen Catalog Number:

AG2889

GenBank Accession Number:

BC010514

GeneID (NCBI):

1191

UNIPROT ID:

P10909

Full Name:

clusterin

Calculated MW:

449 aa, 53 kDa

Observed MW:

37 kDa

Purification Method:

Antigen affinity purification

Recommended Dilutions:

IF-P 1:50-1:500

IF/ICC 1:50-1:500

Excitation/Emission maxima wavelengths:

493 nm / 522 nm

Applications

Tested Applications:

IF/ICC, IF-P

Species Specificity:

human

Positive Controls:

IF-P : human liver tissue,

IF/ICC : HeLa cells,

Background Information

Clusterin (Apolipoprotein J) is a 75-80 kDa heterodimeric glycoprotein produced by a wide array of tissues and found in most biologic fluids (PMID: 7648419; 11906815). It is encoded by one single gene and cleaved posttranslationally into α (34-36 kDa) and β (36-39 kDa) subunits prior to secretion from the cell. Many functions have been described for clusterin, including regulating apoptosis, transporting lipids, controlling cell interactions, regulating complement (PMID: 10694874).

Storage

Storage:

Store at -20°C. Avoid exposure to light. Stable for one year after shipment.

Storage Buffer:

PBS with 50% Glycerol, 0.05% Proclin300, 0.5% BSA, pH 7.3.

Aliquoting is unnecessary for -20°C storage

For technical support and original validation data for this product please contact:

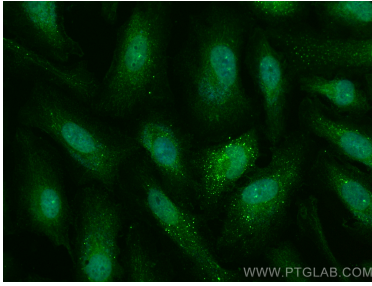
T: 4006900926

E: Proteintech-CN@ptglab.com

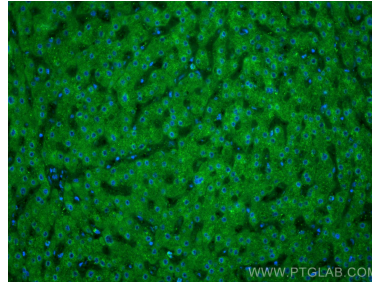
W: ptgcn.com

This product is exclusively available under Proteintech Group brand and is not available to purchase from any other manufacturer.

Selected Validation Data



Immunofluorescent analysis of (4% PFA) fixed HeLa cells using CoraLite® Plus 488 Clusterin antibody (CL488-12289) at dilution of 1:200.



Immunofluorescent analysis of (4% PFA) fixed human liver tissue using CoraLite® Plus 488 Clusterin antibody (CL488-12289) at dilution of 1:100.