

For Research Use Only

CoraLite® Plus 488-conjugated 14-3-3 Epsilon Polyclonal antibody

Catalog Number: CL488-11648

Featured Product



Basic Information

Catalog Number:

CL488-11648

Concentration:

1000 µg/ml

Source:

Rabbit

Isotype:

IgG

Immunogen Catalog Number:

AG2247

GenBank Accession Number:

BC000179

GeneID (NCBI):

7531

UNIPROT ID:

P62258

Full Name:

tyrosine 3-monooxygenase/tryptophan 5-monooxygenase activation protein, epsilon polypeptide

Calculated MW:

255 aa, 29 kDa

Observed MW:

29-32 kDa

Purification Method:

Antigen affinity purification

Recommended Dilutions:

FC (Intra): 0.40 µg per 10⁶ cells in a 100 µl suspension

FC: 0.40 µg per 10⁶ cells in a 100 µl suspension

Excitation/Emission maxima wavelengths:

493 nm / 522 nm

Applications

Tested Applications:

FC (Intra)

Species Specificity:

human, mouse, rat

Positive Controls:

FC (Intra) : HepG2 cells,

FC : HepG2 cells,

Background Information

14-3-3 Epsilon (also known as YWHA E) is a member of 14-3-3 proteins which were the first phosphoserine/phosphothreonine-binding proteins to be discovered. 14-3-3 family members interact with a wide spectrum of proteins and possess diverse functions. Mammals express seven distinct 14-3-3 isoforms (gamma, epsilon, beta, zeta, sigma, theta, tau) that form multiple homo- and hetero- dimers. 14-3-3 proteins display the highest expression levels in the brain, and have been implicated in several neurodegenerative diseases, including Alzheimer's disease and amyotrophic lateral sclerosis. This antibody was raised against full-length 14-3-3 Epsilon.

Storage

Storage:

Store at -20°C. Avoid exposure to light. Stable for one year after shipment.

Storage Buffer:

PBS with 50% glycerol, 0.05% Proclin300, 0.5% BSA, pH7.3

Aliquoting is unnecessary for -20°C storage

For technical support and original validation data for this product please contact:

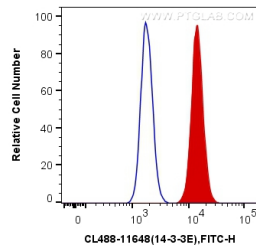
T: 4006900926

E: Proteintech-CN@ptglab.com

W: ptgcn.com

This product is exclusively available under Proteintech Group brand and is not available to purchase from any other manufacturer.

Selected Validation Data



1X10⁶ HepG2 cells were intracellularly stained with 0.4 ug CoraLite® Plus 488 Anti-Human 14-3-3 Epsilon (CL488-11648) (red), or 0.4 ug Control Antibody. Cells were fixed with 4% PFA and permeabilized with Flow Cytometry Perm Buffer (PF00011-C).