

For Research Use Only

CoraLite® Plus 488-conjugated KEAP1 Polyclonal antibody

Catalog Number: CL488-10503

Featured Product

1 Publications



Basic Information

Catalog Number:

CL488-10503

Concentration:

1000 µg/ml

Source:

Rabbit

Isotype:

IgG

Immunogen Catalog Number:

AG0779

GenBank Accession Number:

BC002930

GeneID (NCBI):

9817

UNIPROT ID:

Q14145

Full Name:

kelch-like ECH-associated protein 1

Calculated MW:

624 aa, 70 kDa

Observed MW:

70 kDa

Purification Method:

Antigen affinity purification

Recommended Dilutions:

IF-P 1:50-1:500

Excitation/Emission maxima wavelengths:

493 nm / 522 nm

Applications

Tested Applications:

IF-P

Cited Applications:

IF

Species Specificity:

human, mouse, rat

Cited Species:

mouse

Positive Controls:

IF-P: human breast cancer tissue,

Background Information

KEAP1, also named as INRF2, KIAA0132 and KLHL19, is part of a multiprotein complex that contains the CUL3-ROC1 ubiquitin ligase, which can ubiquitinate the N-terminal domain of NRF2[PMID: 20173742]. Two molecules of KEAP1 bind to two distinct sites in the N-terminal region of NRF2, the ETGE and DLG sites, which affect the KEAP1-NRF2 interaction and/or its physiological consequences[PMID: 22215675]. KEAP1 retains NFE2L2/NRF2 in the cytosol. It functions as substrate adapter protein for the E3 ubiquitin ligase complex formed by CUL3 and RBX1[PMID: 20427290]. It also retains BPTF in the cytosol. This antibody is a rabbit polyclonal antibody raised against residues near the C terminus of human KEAP1.

Read more about this antibody on the blog: <http://blog.ptglab.com/index.php/nsclc-research-anti-keap1-antibody-helps-uncover-targets-biomarker-potential/>

Notable Publications

Author	Pubmed ID	Journal	Application
Nan Tang	39821708	Immunol Res	IF

Storage

Storage:

Store at -20°C. Avoid exposure to light. Stable for one year after shipment.

Storage Buffer:

PBS with 50% glycerol, 0.05% Proclin300, 0.5% BSA, pH7.3

Aliquoting is unnecessary for -20°C storage

For technical support and original validation data for this product please contact:

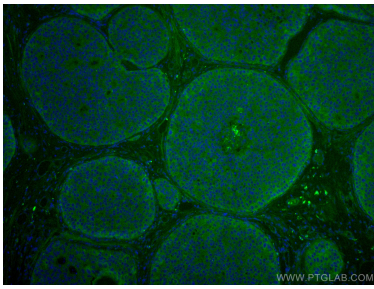
T: 4006900926

E: Proteintech-CN@ptglab.com

W: ptgcn.com

This product is exclusively available under Proteintech Group brand and is not available to purchase from any other manufacturer.

Selected Validation Data



Immunofluorescent analysis of (4% PFA) fixed human breast cancer tissue using CoraLite® Plus 488 KEAP1 antibody (CL488-10503) at dilution of 1:200.