

For Research Use Only

CoraLite® Plus 488-conjugated RPA2 Polyclonal antibody

Catalog Number: CL488-10412



Basic Information

Catalog Number:

CL488-10412

Concentration:

1000 µg/ml

Source:

Rabbit

Isotype:

IgG

Immunogen Catalog Number:

AG0690

GenBank Accession Number:

BC001630

GeneID (NCBI):

6118

UNIPROT ID:

P15927

Full Name:

replication protein A2, 32kDa

Calculated MW:

29 kDa

Observed MW:

32 kDa

Purification Method:

Antigen affinity purification

Recommended Dilutions:

IF/ICC: 1:50-1:500

FC (Intra): 0.80 µg per 10⁶ cells in a 100 µl suspension

Excitation/Emission maxima wavelengths:

493 nm / 522 nm

Applications

Tested Applications:

IF/ICC, FC (Intra)

Species Specificity:

human

Positive Controls:

IF/ICC : A431 cells,

FC (Intra) : U2OS cells,

Background Information

RPA2, a subunit of the heterotrimeric replication protein A (RPA) complex, is overexpressed in various cancers. RPA2 is a major target for upstream kinases, including CDKs and the three PIKKs (ATR, ataxia-telangiectasia mutated [ATM], and DNA-PK). RPA2 comprises multiple critical Ser/Tr residues that are phosphorylated in sequential order in response to genotoxic stress.

Storage

Storage:

Store at -20°C. Avoid exposure to light. Stable for one year after shipment.

Storage Buffer:

PBS with 50% glycerol, 0.05% Proclin300, 0.5% BSA, pH7.3

Aliquoting is unnecessary for -20°C storage

For technical support and original validation data for this product please contact:

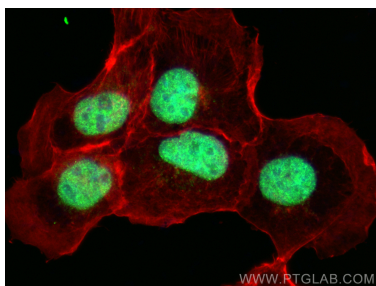
T: 4006900926

E: Proteintech-CN@ptglab.com

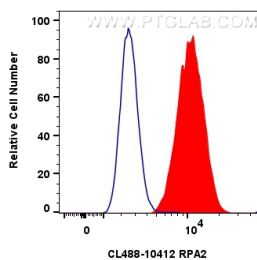
W: ptgcn.com

This product is exclusively available under Proteintech Group brand and is not available to purchase from any other manufacturer.

Selected Validation Data



Immunofluorescent analysis of (4% PFA) fixed A431 cells using CoraLite® Plus 488 RPA2 antibody (CL488-10412) at dilution of 1:200, CL594-Phalloidin (red).



1x10⁶ U2OS cells were intracellularly stained with 0.8 ug CoraLite® Plus 488 Rpa2 Polyclonal Antibody (CL488-10412)(red), or 0.8 ug CoraLite® Plus 488-conjugated Rabbit IgG control Rabbit PolyAb (CL488-30000) (blue). Cells were fixed with 4% PFA and permeabilized with Flow Cytometry Perm Buffer (PF00011-C).