

For Research Use Only

CoraLite® Plus 488-conjugated MMP2 Polyclonal antibody

Catalog Number: CL488-10373

Featured Product



Basic Information

Catalog Number:

CL488-10373

Concentration:

1000 µg/ml

Source:

Rabbit

Isotype:

IgG

Immunogen Catalog Number:

AG0549

GenBank Accession Number:

BC002576

GeneID (NCBI):

4313

UNIPROT ID:

P08253

Full Name:

matrix metalloproteinase 2
(gelatinase A, 72kDa gelatinase,
72kDa type IV collagenase)

Calculated MW:

72 kDa

Observed MW:

53-72 kDa

Purification Method:

Antigen affinity purification

Recommended Dilutions:

IF/ICC: 1:50-1:500

FC (Intra): 0.40 µg per 10⁶ cells in a
100 µl suspension

Excitation/Emission maxima
wavelengths:

493 nm / 522 nm

Applications

Tested Applications:

IF/ICC, FC (Intra)

Species Specificity:

human, mouse, rat

Positive Controls:

IF/ICC : HepG2 cells,

FC (Intra) : PC-3 cells,

Background Information

MMP2, also named as CLG4A, Gelatinase Am, TBE-1 and PEX, belongs to the peptidase M10A family. It is ubiquitous metalloproteinase that is involved in diverse functions such as remodeling of the vasculature, angiogenesis, tissue repair, tumor invasion, inflammation, and atherosclerotic plaque rupture. MMP2 contributes to myocardial oxidative stress by regulating the activity of GSK3beta. It cleaves GSK3beta in vitro. MMP2 can be cleaved into PEX chain (~60kd). Western blot analysis showed that the 72 kDa and 62 kDa proteinase activities were pro-MMP2 and the active enzyme, respectively (PMID:11112697).

Storage

Storage:

Store at -20°C. Avoid exposure to light. Stable for one year after shipment.

Storage Buffer:

PBS with 50% glycerol, 0.05% Proclin300, 0.5% BSA, pH7.3

Aliquoting is unnecessary for -20°C storage

For technical support and original validation data for this product please contact:

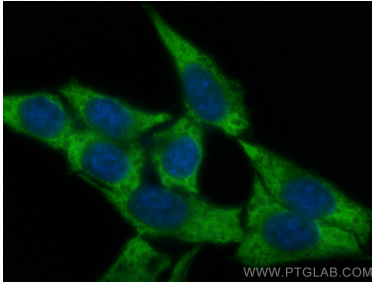
T: 4006900926

E: Proteintech-CN@ptglab.com

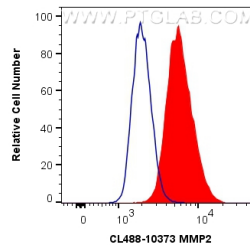
W: ptgcn.com

This product is exclusively available under Proteintech Group brand and is not available to purchase from any other manufacturer.

Selected Validation Data



Immunofluorescent analysis of (-20°C Ethanol) fixed HepG2 cells using CoraLite® Plus 488 MMP2 antibody (CL488-10373) at dilution of 1:200.



1X10⁶ PC-3 cells were intracellularly stained with 0.4 ug CoraLite® Plus 488 Anti-Human MMP2 (CL488-10373) (red), or 0.4 ug Control Antibody. Cells were fixed with 4% PFA and permeabilized with Flow Cytometry Perm Buffer (PF00011-C).