

For Research Use Only

# CoraLite® Plus 405 Anti-Human CD38 (HIT2)

Catalog Number: CL405-65111



## Basic Information

Catalog Number:

CL405-65111

Concentration:

100 tests, 5 µl/test

Source:

Mouse

Isotype:

IgG1, kappa

GenBank Accession Number:

BC007964

GeneID (NCBI):

952

ENSEMBL Gene ID:

ENSG00000004468

Full Name:

CD38 molecule

Calculated MW:

300 aa, 34 kDa

Purification Method:

Affinity purification

CloneNo.:

HIT2

Recommended Dilutions:

FC: 5 µl per 10<sup>6</sup> cells in 100 µl suspension

Excitation/Emission maximum wavelengths:

399 nm / 422 nm

## Applications

Tested Applications:

FC

Species Specificity:

Human

Positive Controls:

FC : human PBMCs,

## Background Information

CD38, also known as ADP-ribosyl cyclase 1, is a type II transmembrane glycoprotein with a short N-terminal cytoplasmic tail, a single membrane-spanning domain, and a C-terminal extracellular region with four N-glycosylation sites (PMID: 2319135). The extracellular domain of CD38 has bifunctional enzyme activities that catalyze synthesis of cyclic ADP ribose from nicotinamide adenine dinucleotide (NAD) and hydrolysis of cyclic ADP ribose to adenosine diphosphoribose (PMID: 10636863). CD38 is expressed on a variety of hematopoietic and non-hematopoietic cells and is involved in diverse processes such as generation of calcium-mobilizing metabolites, cell activation, and chemotaxis (PMID: 25938500).

## Storage

Storage:

Store at 2-8°C. Avoid exposure to light. Stable for one year after shipment.

Storage Buffer:

PBS with 0.09% sodium azide, pH7.3

For technical support and original validation data for this product please contact:

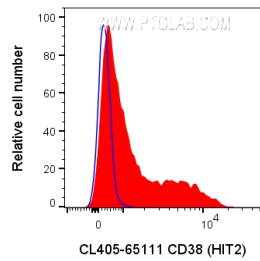
T: 4006900926

E: [Proteintech-CN@ptglab.com](mailto:Proteintech-CN@ptglab.com)

W: [ptgcn.com](http://ptgcn.com)

This product is exclusively available under Proteintech Group brand and is not available to purchase from any other manufacturer.

## Selected Validation Data



1X10<sup>6</sup> human PBMCs were surface stained with 5 ul CoraLite® Plus 405 Anti-Human CD38 (CL405-65111, Clone:HIT2), or CL405 Mouse IgG1 Isotype Control. Cells were not fixed. Lymphocytes were gated.