

For Research Use Only

# Alpha smooth muscle actin specific Recombinant antibody, PBS Only

Catalog Number: 80008-1-PBS

Featured Product



## Basic Information

Catalog Number:

80008-1-PBS

Concentration:

1 mg/ml

Source:

Rabbit

Isotype:

IgG

GenBank Accession Number:

NM\_001613

GeneID (NCBI):

59

UNIPROT ID:

P62736

Full Name:

actin, alpha 2, smooth muscle, aorta

Calculated MW:

42 kDa

Observed MW:

42 kDa

Purification Method:

Protein A purification

CloneNo.:

5H7

## Applications

Tested Applications:

WB, IHC, IF-P, IF-Fro, FC (Intra), Indirect ELISA

Species Specificity:

human, mouse, rat, pig, chicken, zebrafish

## Background Information

ACTA2 (also known as  $\alpha$ -smooth muscle actin or  $\alpha$ -SMA) belongs to the actin family. Actins are highly conserved proteins that are involved in various types of cell motility and are ubiquitously expressed in all eukaryotic cells. ACTA2 is primarily expressed in vascular smooth muscle and anti-ACTA2 is commonly used to marker smooth muscle cells.

## Storage

Storage:

Store at -80°C.

The product is shipped with ice packs. Upon receipt, store it immediately at -80°C

Storage Buffer:

PBS only, pH7.3

For technical support and original validation data for this product please contact:

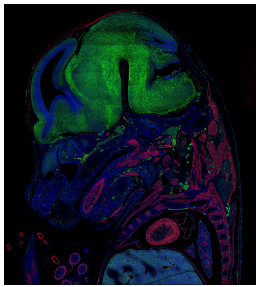
T: 4006900926

E: Proteintech-CN@ptglab.com

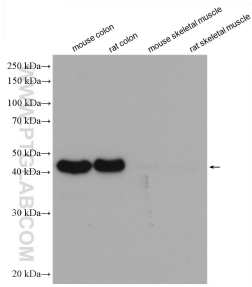
W: ptgcn.com

This product is exclusively available under Proteintech Group brand and is not available to purchase from any other manufacturer.

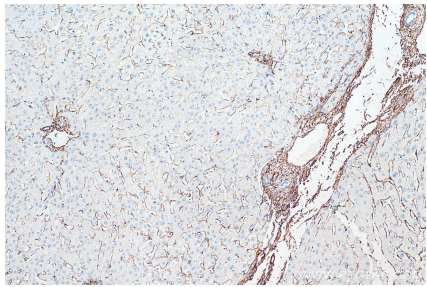
Selected Validation Data



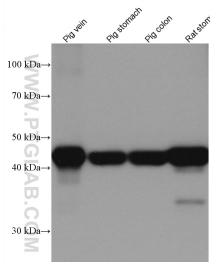
E14.5 FFPE mouse embryo section stained for smooth muscle actin (red, Cat. No 80008-1-RR) and alpha tubulin (green, Cat. CL488-66031). The alpha tubulin was conjugated to Coralite-488 fluorescent dye. In red, you can see muscle tissue clearly stained including the tongue, heart, and arteries. Nerves and neurons are stained green since they are rich in tubulin. Image credit: @Immunofluorescence on Instagram This data was developed using the same antibody



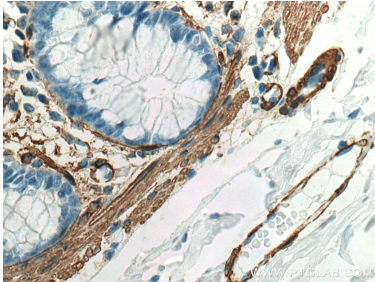
Various lysates were subjected to SDS PAGE followed by western blot with 80008-1-RR (smooth muscle actin specific antibody) at dilution of 1:100000 incubated at room temperature for 1.5 hours. This data was developed using the same antibody clone with 80008-1-PBS in a different storage buffer formulation.



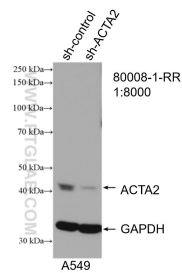
Immunohistochemical analysis of paraffin-embedded human liver tissue slide using 80008-1-RR (smooth muscle actin specific antibody) at dilution of 1:5000 (under 10x lens). Heat mediated antigen retrieval with Tris-EDTA buffer (pH 9.0). This data was developed using the same antibody clone with 80008-1-PBS in a different storage buffer formulation.



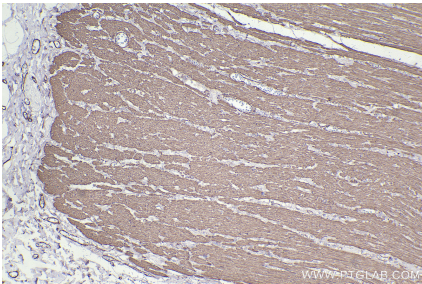
Various lysates were subjected to SDS PAGE followed by western blot with 80008-1-RR (smooth muscle actin specific antibody) at dilution of 1:100000 incubated at room temperature for 1.5 hours. This data was developed using the same antibody clone with 80008-1-PBS in a different storage buffer formulation.



Immunohistochemical analysis of paraffin-embedded human colon tissue slide using 80008-1-RR (a-SMA specific antibody) at dilution of 1:3000 (under 40x lens). Heat mediated antigen retrieval with Tris-EDTA buffer (pH 9.0). This data was developed using the same antibody clone with 80008-1-PBS in a different storage buffer formulation.



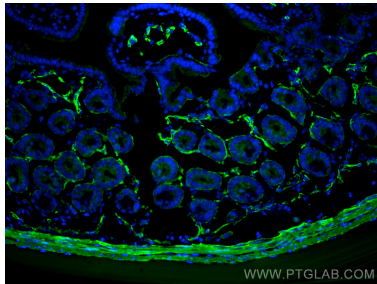
WB result of smooth muscle actin specific antibody (80008-1-RR; 1:8000; incubated at room temperature for 1.5 hours) with sh-Control and sh-smooth muscle actin specific transfected A549 cells. This data was developed using the same antibody clone with 80008-1-PBS in a different storage buffer formulation.



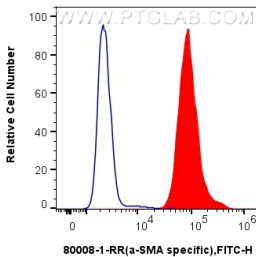
Immunohistochemical analysis of paraffin-embedded human rectal cancer tissue slide using 80008-1-RR (smooth muscle actin specific antibody) at dilution of 1:10000 (under 10x lens). Heat mediated antigen retrieval with Tris-EDTA buffer (pH 9.0). This data was developed using the same antibody clone with 80008-1-PBS in a different storage buffer formulation.



Immunofluorescent analysis of (4% PFA) fixed paraffin-embedded mouse heart tissue using smooth muscle actin specific antibody (80008-1-RR, Clone: 5H7) at dilution of 1:1000 and Coralite@488-Conjugated AffiniPure Goat Anti-Rabbit IgG(H+L) (SA00013-2). Heat mediated antigen retrieval with Tris-EDTA buffer (pH 9.0). This data was developed using the same antibody clone with 80008-1-PBS in a different storage buffer formulation.



Immunofluorescent analysis of (4% PFA) fixed frozen OCT-embedded mouse small intestine tissue using Alpha smooth muscle actin specific antibody (80008-1-RR, Clone: 5H7) at dilution of 1:400 and Coralite@488-Conjugated Goat Anti-Rabbit IgG(H+L) (SA00013-2). This data was developed using the same antibody clone with 80008-1-PBS in a different storage buffer formulation.



1x10<sup>6</sup> C2C12 cells were intracellularly stained with 0.5 ug smooth muscle actin specific Recombinant antibody (80008-1-RR, Clone:5H7) and CoraLite®488-Conjugated AffiniPure Goat Anti-Rabbit IgG(H+L) (SA00013-2)(red), or 0.5 ug Isotype Control (blue). Cells were fixed with 4% PFA and permeabilized with Flow Cytometry Perm Buffer (PF00011-C). This data was developed using the same antibody clone with 80008-1-PBS in a different storage buffer formulation.

