

For Research Use Only

MAP2 Monoclonal antibody, PBS Only

Catalog Number: 67015-1-PBS



Basic Information

Catalog Number:	67015-1-PBS	GenBank Accession Number:	BC038857	Purification Method:	Protein A purification
Concentration:	1mg/ml	GeneID (NCBI):	4133	CloneNo.:	1C3E6
Source:	Mouse	UNIPROT ID:	P11137		
Isotype:	IgG2b	Full Name:	microtubule-associated protein 2		
Immunogen Catalog Number:	AG11349	Calculated MW:	200 kDa		

Applications

Tested Applications:
IHC, IF-P, IF-Fro, FC (Intra), Indirect ELISA

Species Specificity:
human, mouse, rat

Background Information

MAP2 (microtubule-associated protein 2) is a cytoskeleton protein abundant in brain and has important role in neuronal morphogenesis. Multiple high molecular weight (MW) and low molecular weight (MW) MAP2 isoforms are expressed within axons, dendrites, and cell bodies. The expression of MAP2 is regulated in both a tissue- and developmentally specific manner. MAP2 antibodies have been widely used to mark the neuron or dendrite formation.

Storage

Storage:
Store at -80°C.

The product is shipped with ice packs. Upon receipt, store it immediately at -80°C

Storage Buffer:
PBS only, pH7.3

For technical support and original validation data for this product please contact:

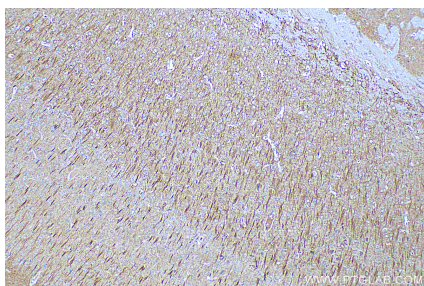
T: 4006900926

E: Proteintech-CN@ptglab.com

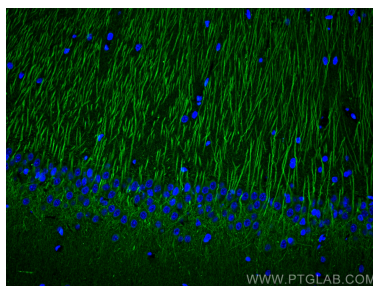
W: ptgcn.com

This product is exclusively available under Proteintech Group brand and is not available to purchase from any other manufacturer.

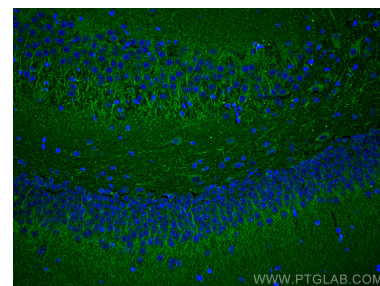
Selected Validation Data



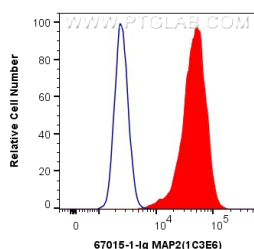
Immunohistochemical analysis of paraffin-embedded mouse brain tissue slide using 67015-1-Ig (MAP2 antibody) at dilution of 1:2000 (under 10x lens). Heat mediated antigen retrieval with Tris-EDTA buffer (pH 9.0). This data was developed using the same antibody clone with 67015-1-PBS in a different storage buffer formulation.



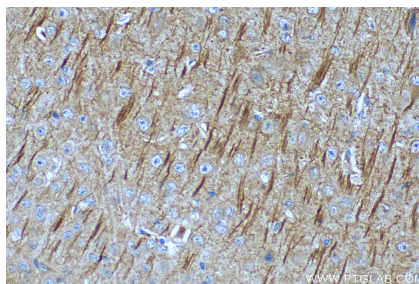
Immunofluorescent analysis of (4% PFA) fixed rat brain tissue using MAP2 antibody (67015-1-Ig, Clone: 1C3E6) at dilution of 1:400 and CoraLite®488-Conjugated AffiniPure Goat Anti-Mouse IgG(H+L). This data was developed using the same antibody clone with 67015-1-PBS in a different storage buffer formulation.



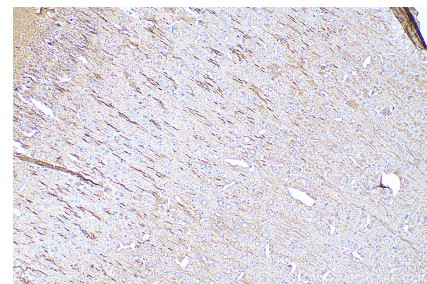
Immunofluorescent analysis of (4% PFA) fixed mouse brain tissue using MAP2 antibody (67015-1-Ig, Clone: 1C3E6) at dilution of 1:400 and CoraLite®488-Conjugated AffiniPure Goat Anti-Mouse IgG(H+L). This data was developed using the same antibody clone with 67015-1-PBS in a different storage buffer formulation.



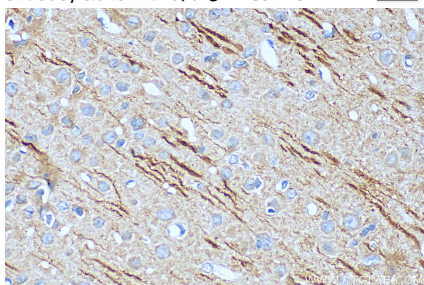
1X10⁶ Neuro-2a cells were intracellularly stained with 0.4 ug Anti-Human MAP2 (67015-1-Ig, Clone:1C3E6) and CoraLite®488-Conjugated AffiniPure Goat Anti-Mouse IgG(H+L) at dilution 1:1000 (red), or 0.4 ug Mouse IgG2b Isotype Control (MPC-11) (65128-1-Ig, Clone: MPC-11) (blue). Cells were fixed with 4% PFA and permeabilized with Flow Cytometry Perm Buffer (PF00011-C). This data was developed using the same antibody clone with 67015-1-PBS in a



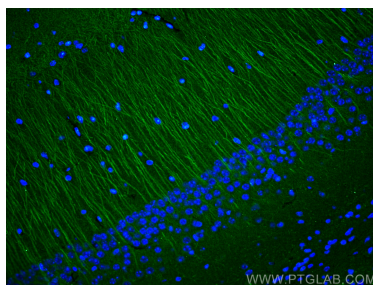
Immunohistochemical analysis of paraffin-embedded mouse brain tissue slide using 67015-1-Ig (MAP2 antibody) at dilution of 1:2000 (under 40x lens). Heat mediated antigen retrieval with Tris-EDTA buffer (pH 9.0). This data was developed using the same antibody clone with 67015-1-PBS in a different storage buffer formulation.



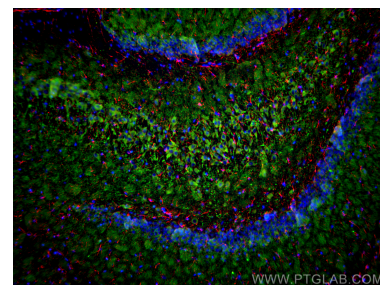
Immunohistochemical analysis of paraffin-embedded rat brain tissue slide using 67015-1-Ig (MAP2 antibody) at dilution of 1:2000 (under 10x lens). Heat mediated antigen retrieval with Tris-EDTA buffer (pH 9.0). This data was developed using the same antibody clone with 67015-1-PBS in a different storage buffer formulation.



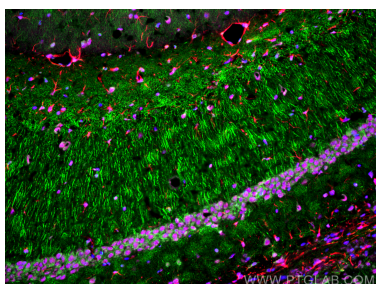
Immunohistochemical analysis of paraffin-embedded rat brain tissue slide using 67015-1-Ig (MAP2 antibody) at dilution of 1:2000 (under 40x lens). Heat mediated antigen retrieval with Tris-EDTA buffer (pH 9.0). This data was developed using the same antibody clone with 67015-1-PBS in a different storage buffer formulation.



Immunofluorescent analysis of (4% PFA) fixed mouse brain tissue using MAP2 antibody (67015-1-Ig, Clone: 1C3E6) at dilution of 1:400 and CoraLite®488-Conjugated AffiniPure Goat Anti-Mouse IgG(H+L). This data was developed using the same antibody clone with 67015-1-PBS in a different storage buffer formulation.



Immunofluorescent analysis of (4% PFA) fixed frozen OCT-embedded rat brain tissue using MAP2 antibody (67015-1-Ig, Clone: 1C3E6) at dilution of 1:2000 and CoraLite®488-Conjugated Goat Anti-Mouse IgG(H+L) (SA00013-1), GFAP antibody (81063-1-RR, Clone: 4C6, red). This data was developed using the same antibody clone with 67015-1-PBS in a different storage buffer formulation.



Immunofluorescent analysis of (4% PFA) fixed frozen OCT-embedded mouse brain tissue using MAP2 antibody (67015-1-Ig, Clone: 1C3E6) at dilution of 1:2000 and CoraLite®488-Conjugated Goat Anti-Mouse IgG(H+L) (SA00013-1), CoraLite®594 GFAP antibody (CL594-16825, red), TDP-43 antibody (10782-2-AP, Magenta). This data was developed using the same antibody clone with 67015-1-PBS in a different storage buffer formulation.