

For Research Use Only

# TLR2 Monoclonal antibody, PBS Only (Capture)

Catalog Number: 66645-1-PBS

Featured Product



## Basic Information

Catalog Number:

66645-1-PBS

Size:

1mg/ml

Source:

Mouse

Isotype:

IgG2a

Immunogen Catalog Number:

AG25626

GenBank Accession Number:

BC033756

GeneID (NCBI):

7097

UNIPROT ID:

O60603

Full Name:

toll-like receptor 2

Calculated MW:

784 aa, 90 kDa

Observed MW:

90-100 kDa

Purification Method:

Protein A purification

CloneNo.:

1C1D3

## Applications

Tested Applications:

WB, IHC, IF/ICC, Cytometric bead array, Indirect ELISA

Species Specificity:

human

## Background Information

TLR2, also known as CD282, is a Toll-like receptor (TLR) family member. TLR receptors are type I integral transmembrane glycoproteins that play a fundamental role in pathogen recognition and activation of innate immunity. TLR2 is expressed by immune cells including monocytes/macrophages, polymorphonuclear leukocytes (PMLs), and dendritic cells, and is also expressed by some non-immune cells including endothelial and epithelial cells (PMID: 21428911; 22566960). TLR2 forms heterodimers with TLR1 and TLR6, which is the initial step in a cascade of events leading to significant innate immune responses, development of adaptive immunity to pathogens, and protection from immune sequelae related to infection with these pathogens (PMID: 22566960).

## Storage

Storage:

Store at -80°C.

The product is shipped with ice packs. Upon receipt, store it immediately at -80°C

Storage Buffer:

PBS Only

For technical support and original validation data for this product please contact:

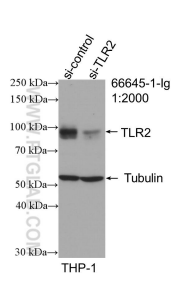
T: 4006900926

E: [Proteintech-CN@ptglab.com](mailto:Proteintech-CN@ptglab.com)

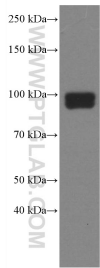
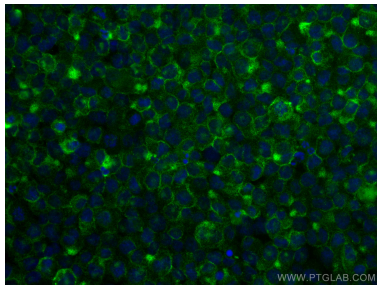
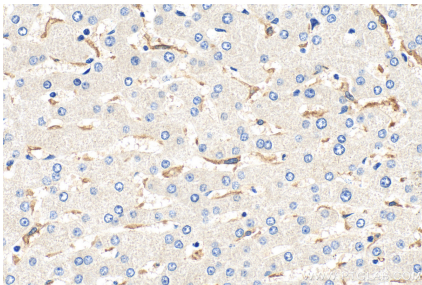
W: [ptgcn.com](http://ptgcn.com)

This product is exclusively available under Proteintech Group brand and is not available to purchase from any other manufacturer.

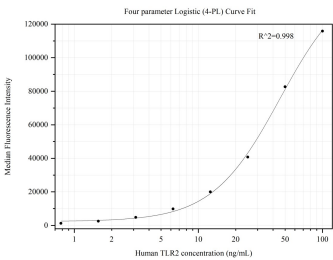
Selected Validation Data



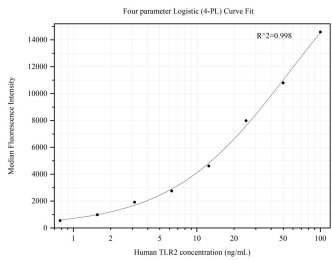
WB result of TLR2 antibody (66645-1-Ig; 1:2000; incubated at room temperature for 1.5 hours) with sh-Control and sh-TLR2 transfected THP-1 cells. This data was developed using the same antibody clone with 66645-1-PBS in a different storage buffer formulation.



THP-1 cells were subjected to SDS PAGE followed by western blot with 66645-1-Ig (TLR2 antibody) at dilution of 1:2000 incubated at room temperature for 1.5 hours. This data was developed using the same antibody clone with 66645-1-PBS in a different storage buffer formulation.



Cytometric bead array standard curve of MP50388-1, TLR2 Monoclonal Matched Antibody Pair, PBS Only. Capture antibody: 66645-1-PBS. Detection antibody: 66645-2-PBS. Standard: Ag25626. Range: 0.781-100 ng/mL.



Cytometric bead array standard curve of MP50388-3, TLR2 Monoclonal Matched Antibody Pair, PBS Only. Capture antibody: 66645-1-PBS. Detection antibody: 66645-4-PBS. Standard: Ag25626. Range: 0.781-100 ng/mL.